



Complete Health Indicator Report of Prostate Cancer Incidence

Definition

The rate of prostate cancer incidence in Utah per 100,000 males.

Numerator

The number of incidents of prostate cancer among Utah men for a given time period.

Denominator

The population of Utah for a specific time period.

Why Is This Important?

Prostate cancer is the most commonly occurring form of cancer (excluding skin cancer) among men and is the second leading cause of cancer-related death for men in Utah. All men older than age of 40 should visit their doctor for routine health visits annually, which may include a discussion on prostate health.

Healthy People Objective C-19:

Increase the proportion of men who have discussed the advantages and disadvantages of the prostate-specific antigen (PSA) test to screen for prostate cancer with their health care provider

U.S. Target: 15.9 percent

How Are We Doing?

In 2017, Utah's age-adjusted incidence rate of prostate cancer was 112.2 cases per 100,000 men. From 2015-2017, the highest rates of age-adjusted prostate cancer incidence were found in Summit County LHD (171.2 cases per 100,000 men) and Tooele County LHD (166.1 cases per 100,000 men), while the lowest

rates of age-adjusted prostate cancer incidence were found in San Juan LHD (31.4 cases per 100,000 men) and Central Utah LHD (88.1 cases per 100,000 men). These differences were statistically significant compared to the state age-adjusted rate during the same time period. For more information on the geographical distribution of prostate cancer incidence, see the Utah Small Areas view. From 2014-2016 Utah Hispanic men had a significantly lower age-adjusted incidence rate of prostate cancer (80.9 cases per 100,000 men) compared to non-Hispanic men (110.3 cases per 100,000 men). Men who racially identified as Native Hawaiian/Other Pacific Islander or Black/African American had significantly higher rates of prostate cancer incidence (154.8 cases and 164.8 cases per 100,000 men, respectively) compared to Asian and American Indian/Alaskan Native men who had the lowest rates of prostate cancer incidence (43.6 cases and 38.9 cases per 100,000 men, respectively). Incidence of prostate cancer increases significantly with age. The highest rates of prostate cancer incidence in Utah are found in males older than 65 years of age (632.9 cases per 100,000 men), while rates for men age 45-64 are also high (182.4 cases per 100,000 men). Prostate cancer is very rare among men younger than 45 years of age (0.6 cases per 100,000 men).

How Do We Compare With the U.S.?

In 2016 (the most recent comparison data available), Utah's age-adjusted incidence rate of prostate cancer of 113.2 cases per 100,000 males was significantly higher than the U.S. rate of 101.4 cases per 100,000 males.

What Is Being Done?

The Utah Comprehensive Cancer Control program (CCC) and its affiliated coalition, the Utah Cancer Action Network (UCAN), work together with state and local partners to reduce the burden of cancer in Utah. Their mission is to lower cancer incidence, morbidity, and mortality in Utah through collaborative efforts directed toward cancer prevention and control. As a result, they support community-based strategies around food security, healthy neighborhoods, access to health care, and financial toxicity in order to prevent cancer; detect cancer early; and improve the lives of cancer survivors, caregivers, and their families.

Evidence-based Practices

Screening recommendations have changed over time. Until recently, many doctors and professional organizations encouraged yearly prostate-specific antigen (PSA) screening for men beginning at age 50. However, as more has been learned about both the benefits and harms of prostate cancer screening, a number of organizations have begun to caution against routine population screening. Although some organizations continue to recommend PSA screening, there is widespread agreement that any man who is considering getting tested should first be informed in detail about the potential harms and benefits.

Currently, Medicare provides coverage for an annual PSA test for all Medicare-eligible men age 50 and older. Many private insurers cover PSA screening as well.

Since 2018, the U.S. Preventive Services Task Force (USPSTF) recommends that those aged 55-69 with a

prostate discuss the potential benefits and potential harms of prostate-specific antigen (PSA)-based screening for prostate cancer before deciding on whether or not to be screened.

Healthy diet, exercise, and lifestyle play an important role in cancer prevention.

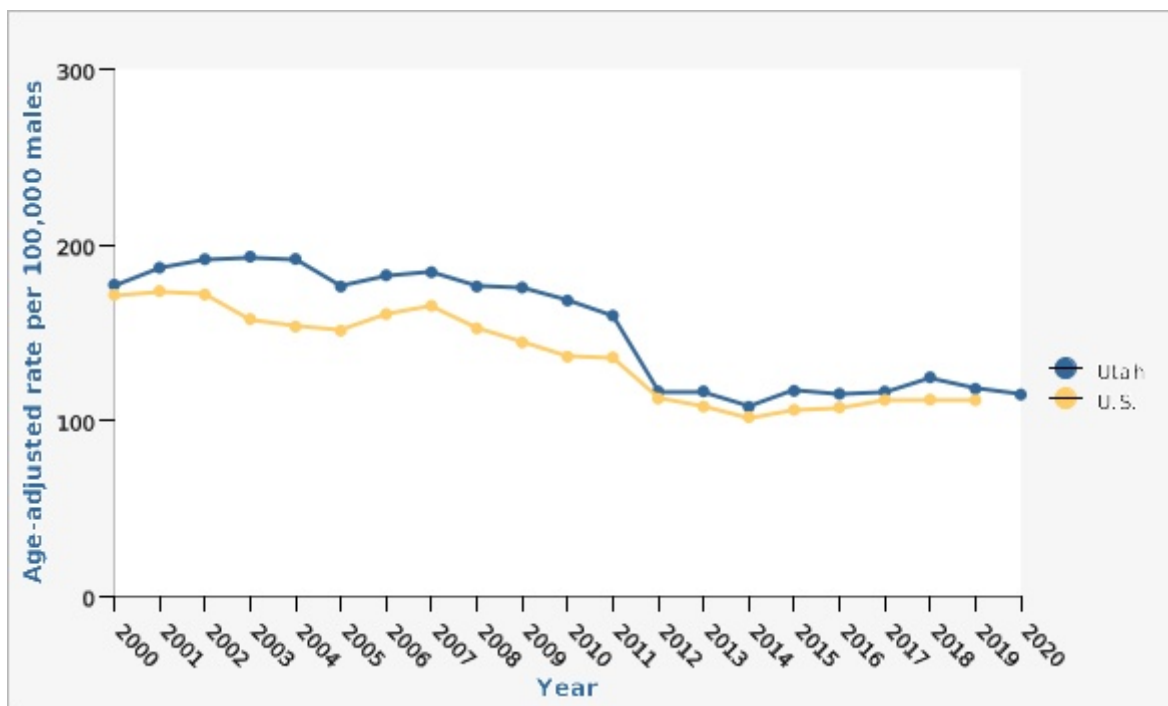
Related Indicators

Related Relevant Population Characteristics Indicators:

- [Prostate Cancer Deaths](#)
- [Prostate Cancer Screening](#)

Graphical Data Views

Prostate cancer incidence by year, Utah and U.S., 2000-2020



Utah vs. U.S.	Year	Age-adjusted rate per 100,000 males	Lower Limit	Upper Limit
Utah	2000	177.2	167.4	187.4
Utah	2001	187.0	177.1	197.3
Utah	2002	191.8	182.0	202.0
Utah	2003	193.2	183.4	203.4
Utah	2004	191.9	182.4	201.8
Utah	2005	176.2	167.3	185.5

Utah vs. U.S. [Year](#) Age-adjusted rate per 100,000 males Lower Limit Upper Limit

Utah	2006	182.7	173.8	191.9
Utah	2007	184.3	175.5	193.4
Utah	2008	176.2	167.8	184.9
Utah	2009	175.6	167.4	184.2
Utah	2010	168.3	160.4	176.5
Utah	2011	159.7	152.1	167.6
Utah	2012	116.6	110.2	123.2
Utah	2013	116.5	110.3	123.0
Utah	2014	107.8	101.9	113.9
Utah	2015	116.8	110.8	123.0
Utah	2016	115.1	109.2	121.2
Utah	2017	116.4	110.6	122.4
Utah	2018	124.6	118.7	130.7
Utah	2019	118.0	112.4	123.8
Utah	2020	114.7	109.2	120.3
U.S.	2000	171.5	170.8	172.3
U.S.	2001	173.7	172.9	174.4
U.S.	2002	171.6	170.9	172.4
U.S.	2003	157.6	157.0	158.4
U.S.	2004	153.4	152.7	154.1
U.S.	2005	151.1	150.4	151.7
U.S.	2006	160.5	159.9	161.2
U.S.	2007	165.2	164.6	165.9
U.S.	2008	152.4	151.8	153.1
U.S.	2009	144.4	143.8	145.1
U.S.	2010	136.3	135.8	136.9
U.S.	2011	135.9	135.3	136.5
U.S.	2012	112.5	112.0	113.0
U.S.	2013	107.9	107.4	108.4
U.S.	2014	101.8	101.3	102.3
U.S.	2015	106.0	105.6	106.5
U.S.	2016	107.4	107.0	107.9
U.S.	2017	111.7	111.2	112.2
U.S.	2018	111.9	111.4	112.4
U.S.	2019	111.6	111.1	112.1

Data Notes

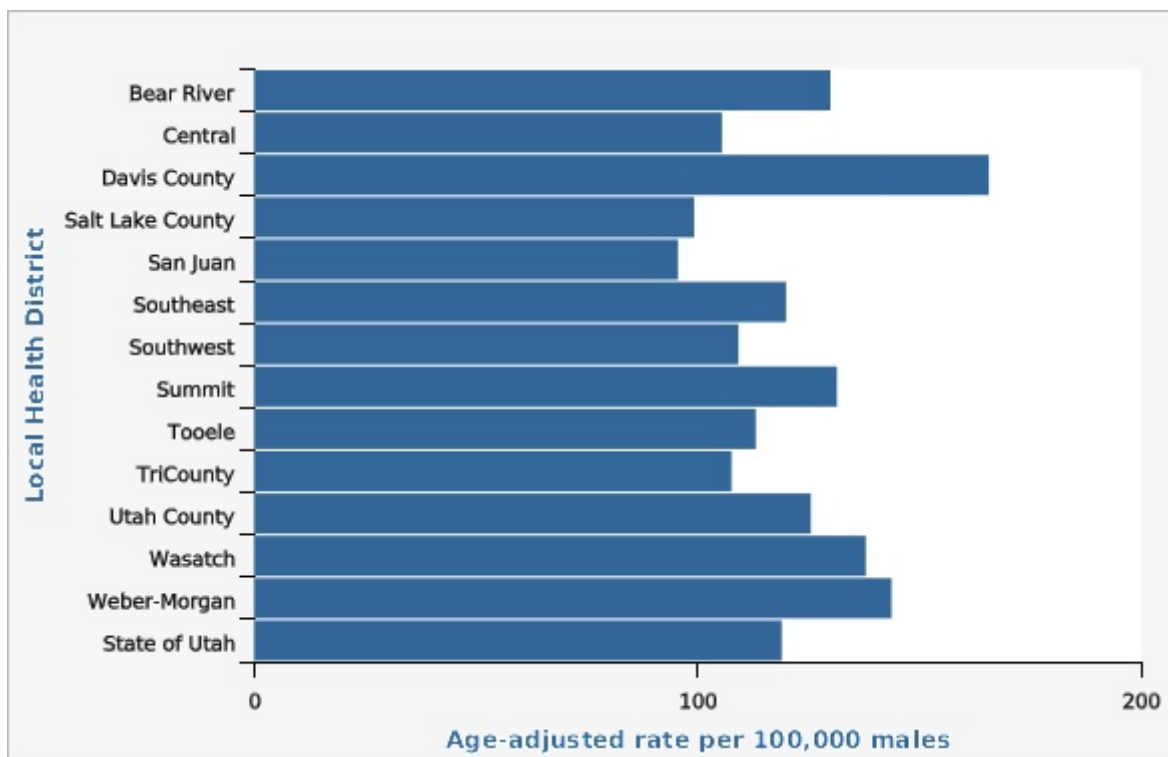
Age-adjusted to U.S. 2000 population.

*U.S. Data available through 2019

Data Sources

- Cancer data provided by the Utah Cancer Registry, supported by the National Cancer Institute (HHSN261201800016I), the U.S. Center for Disease Control and Prevention (NU58DP0063200), the University of Utah, and Huntsman Cancer Foundation
- U.S. Cancer Statistics: WONDER Online Database. United States Department of Health and Human Services, Centers for Disease Control and Prevention and National Cancer Institute. Accessed at <http://wonder.cdc.gov/cancer.html>

Prostate cancer incidence by local health district, Utah, 2018-2020



Local Health District Age-adjusted rate per 100,000 males Lower Limit Upper Limit

Local Health District	Age-adjusted rate per 100,000 males	Lower Limit	Upper Limit
Bear River	130.0	115.7	145.5
Central	105.5	89.7	123.2
Davis County	165.7	153.7	178.3
Salt Lake County	99.2	94.2	104.4
San Juan	95.5	61.4	141.8
Southeast	119.9	97.7	145.7
Southwest	109.2	100.3	118.7
Summit	131.4	107.0	159.8
Tooele	113.1	91.5	138.3
TriCounty	107.6	86.4	132.5
Utah County	125.5	116.6	135.0

Local Health District	Age-adjusted rate per 100,000 males	Lower Limit	Upper Limit
Wasatch	137.9	107.9	173.8
Weber-Morgan	143.7	131.9	156.3
State of Utah	119.0	115.7	122.3

Data Notes

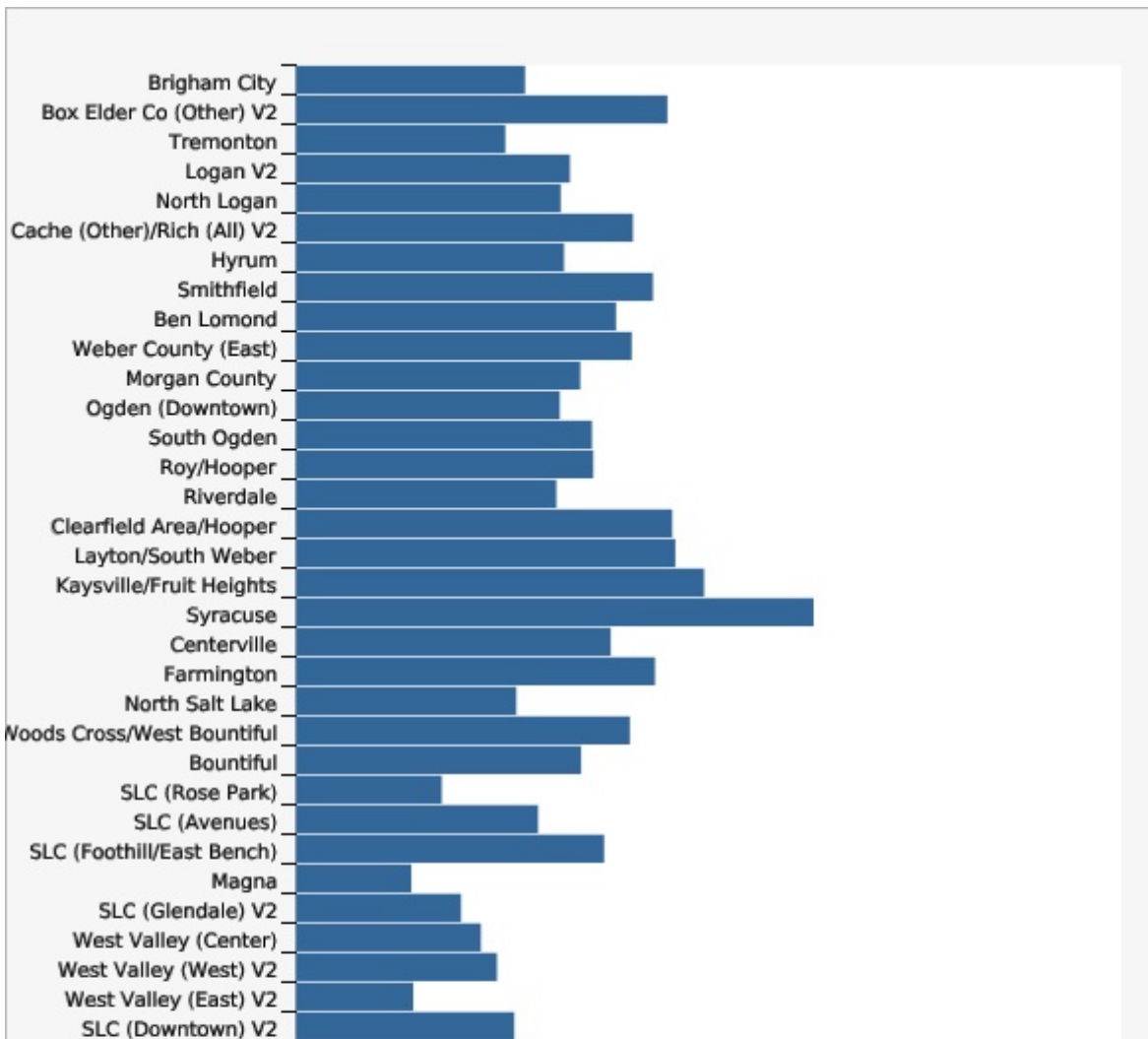
Age-adjusted to U.S. 2000 population.

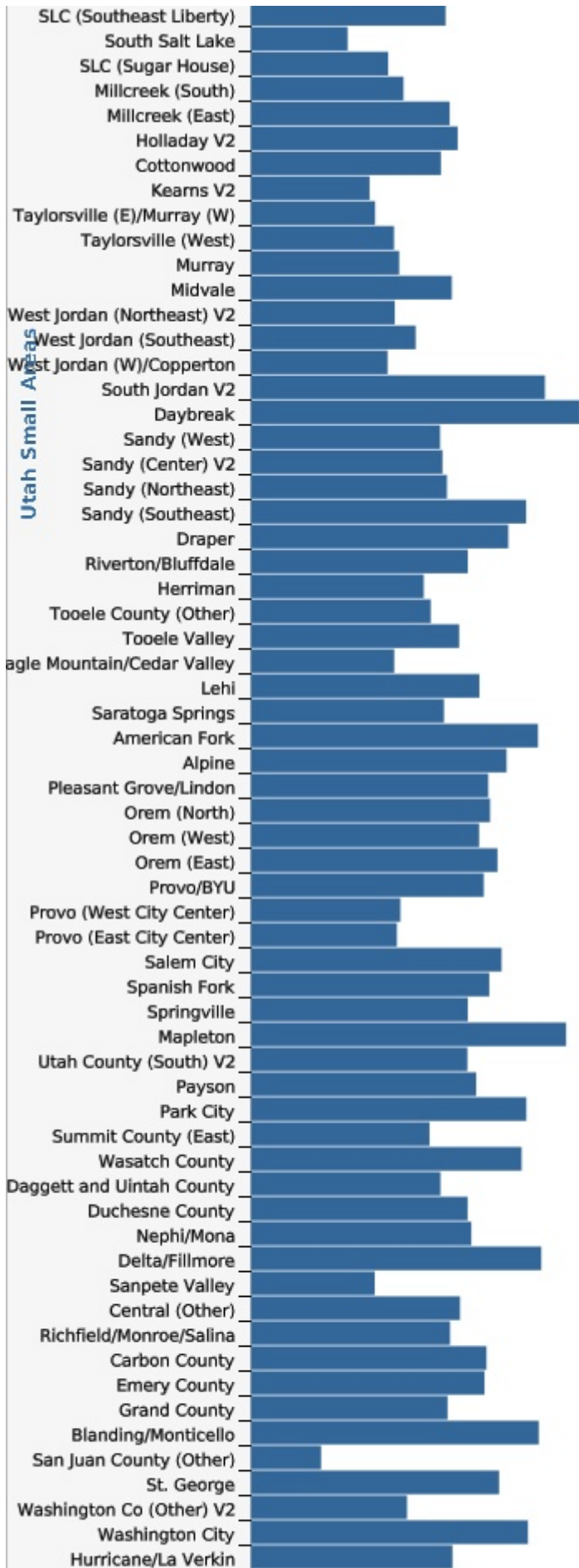
^Prior to 2015 San Juan County was part of the Southeast Local Health District. In 2015 the San Juan County Local Health District was formed. Data reported are for all years using the current boundaries.

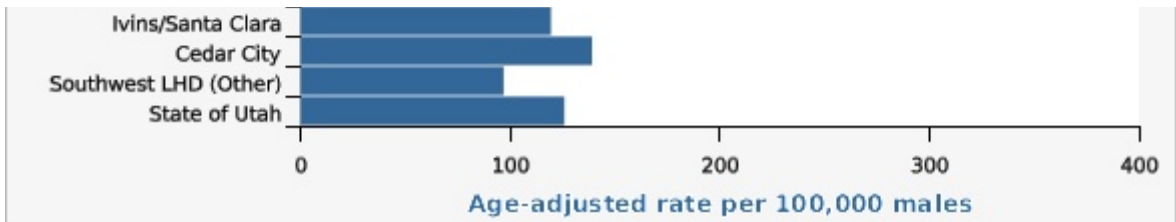
Data Source

Cancer data provided by the Utah Cancer Registry, supported by the National Cancer Institute (HHSN261201800016I), the U.S. Center for Disease Control and Prevention (NU58DP0063200), the University of Utah, and Huntsman Cancer Foundation

Prostate cancer incidence by Utah small area, 2018-2020







Utah Small Areas	Age-adjusted rate per 100,000 males	Lower Limit	Upper Limit
Brigham City	111.1	80.1	150.0
Box Elder Co (Other) V2	180.0	124.3	252.3
Tremonton	101.5	64.4	152.1
Logan V2	132.8	104.0	167.1
North Logan	128.4	85.8	184.6
Cache (Other)/Rich (All) V2	163.3	123.2	212.4
Hyrum	130.0	66.6	228.3
Smithfield	173.0	114.2	251.4
Ben Lomond	155.2	129.3	184.6
Weber County (East)	162.8	133.7	196.2
Morgan County	137.8	90.1	201.7
Ogden (Downtown)	127.9	98.6	163.1
South Ogden	143.5	114.0	178.2
Roy/Hooper	144.1	115.4	177.8
Riverdale	126.2	94.0	166.0
Clearfield Area/Hooper	182.4	151.0	218.4
Layton/South Weber	183.9	158.0	212.8
Kaysville/Fruit Heights	197.8	158.7	243.7
Syracuse	250.9	191.9	322.2
Centerville	152.6	109.5	206.9
Farmington	174.0	127.3	232.3
North Salt Lake	106.8	66.1	163.4
Woods Cross/West Bountiful	161.8	102.6	242.8
Bountiful	138.2	114.0	166.1
SLC (Rose Park)	70.7	45.7	104.4
SLC (Avenues)	117.4	87.5	154.2
SLC (Foothill/East Bench)	149.4	111.0	196.7
Magna	56.0	30.1	95.0
SLC (Glendale) V2	80.0	48.0	125.3
West Valley (Center)	89.7	67.4	116.9
West Valley (West) V2	97.4	63.2	143.6
West Valley (East) V2	56.9	39.1	80.1
SLC (Downtown) V2	105.8	78.5	139.6
SLC (Southeast Liberty)	112.0	75.6	159.7

Utah Small Areas	Age-adjusted rate per 100,000 males	Lower Limit	Upper Limit
South Salt Lake	55.6	32.2	89.5
SLC (Sugar House)	78.9	56.1	108.0
Millcreek (South)	87.7	61.2	121.8
Millcreek (East)	114.3	84.4	151.4
Holladay V2	118.9	89.4	155.1
Cottonwood	109.3	88.8	133.1
Kearns V2	68.2	42.5	103.9
Taylorsville (E)/Murray (W)	71.4	50.7	97.8
Taylorsville (West)	82.3	59.0	111.7
Murray	85.3	62.2	114.0
Midvale	115.5	84.0	155.0
West Jordan (Northeast) V2	82.7	54.2	120.9
West Jordan (Southeast)	94.8	64.6	134.2
West Jordan (W)/Copperton	78.6	49.2	119.2
South Jordan V2	169.1	136.3	207.4
Daybreak	189.5	129.0	268.6
Sandy (West)	108.8	78.9	146.3
Sandy (Center) V2	110.2	80.5	147.2
Sandy (Northeast)	112.8	84.0	148.2
Sandy (Southeast)	158.3	125.5	197.0
Draper	148.0	112.8	190.8
Riverton/Bluffdale	124.7	94.8	161.1
Herriman	99.4	67.4	141.2
Tooele County (Other)	103.4	63.7	158.7
Tooele Valley	119.8	94.2	150.1
Eagle Mountain/Cedar Valley	82.4	48.4	131.1
Lehi	131.4	100.0	169.5
Saratoga Springs	111.0	70.9	165.7
American Fork	165.1	131.1	205.3
Alpine	147.0	92.5	221.8
Pleasant Grove/Lindon	136.5	107.5	170.9
Orem (North)	137.5	100.6	183.7
Orem (West)	131.2	98.0	172.2
Orem (East)	141.8	103.3	189.9
Provo/BYU	133.9	102.6	171.7
Provo (West City Center)	86.0	52.9	131.9
Provo (East City Center)	84.0	39.5	156.3
Salem City	144.2	89.2	220.4
Spanish Fork	137.1	101.5	181.0
Springville	124.7	91.2	166.6
Mapleton	181.3	117.3	267.7

Utah Small Areas	Age-adjusted rate per 100,000 males	Lower Limit	Upper Limit
Utah County (South) V2	124.5	72.4	199.5
Payson	129.6	92.4	176.7
Park City	158.4	124.6	198.5
Summit County (East)	102.7	62.4	159.4
Wasatch County	155.7	121.9	195.9
Daggett and Uintah County	109.0	80.8	143.9
Duchesne County	124.6	87.9	171.6
Nephi/Mona	126.8	71.5	207.9
Delta/Fillmore	167.0	112.3	239.0
Sanpete Valley	71.2	45.4	106.4
Central (Other)	120.2	91.2	155.7
Richfield/Monroe/Salina	114.5	77.7	162.7
Carbon County	135.5	101.3	177.4
Emery County	134.4	86.8	198.6
Grand County	113.1	72.0	169.2
Blanding/Monticello	165.6	101.4	255.1
San Juan County (Other)	40.4	10.1	107.8
St. George	142.7	125.0	162.2
Washington Co (Other) V2	89.8	58.8	131.4
Washington City	159.3	124.3	201.1
Hurricane/La Verkin	115.9	86.6	151.9
Ivins/Santa Clara	119.5	86.2	161.4
Cedar City	139.1	110.2	173.2
Southwest LHD (Other)	96.9	72.6	126.7
State of Utah	125.9	122.4	129.4

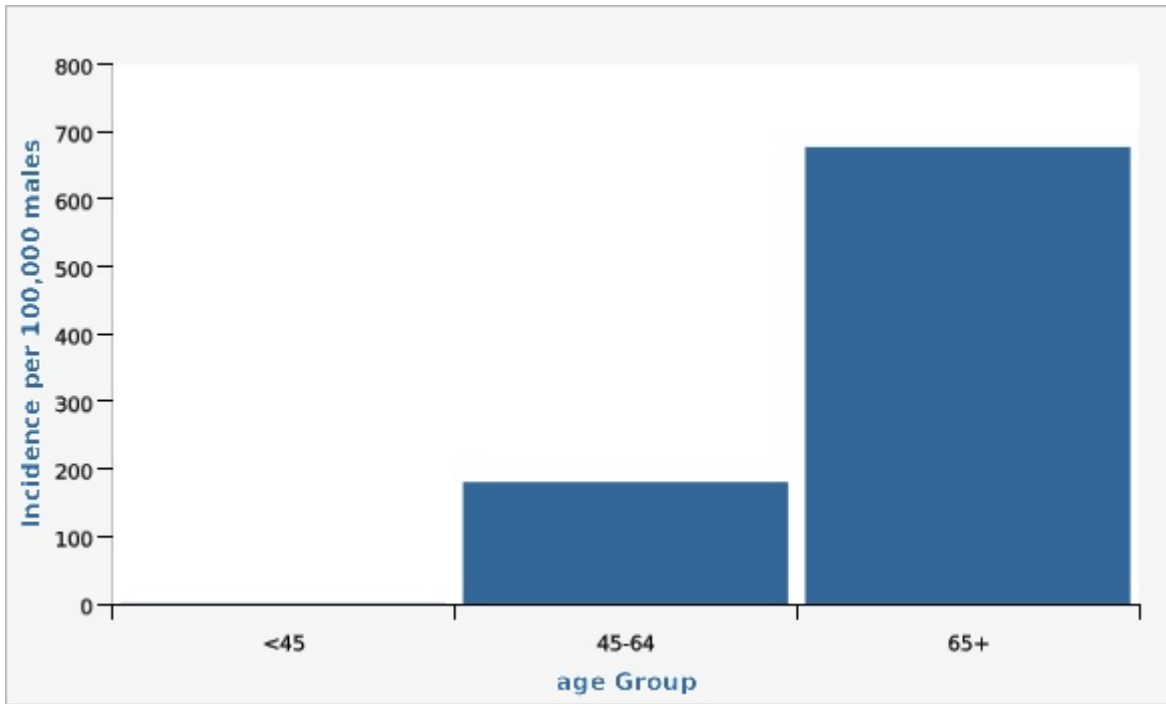
Data Notes

Age adjusted to the U.S. 2000 standard population.

Data Source

Cancer data provided by the Utah Cancer Registry, supported by the National Cancer Institute (HHSN261201800016I), the U.S. Center for Disease Control and Prevention (NU58DP0063200), the University of Utah, and Huntsman Cancer Foundation

Prostate cancer incidence by age group, Utah 2018-2020



age Group	Incidence per 100,000 males	Lower Limit	Upper Limit
<45	0.7	0.4	1.1
45-64	180.5	172.1	189.3
65+	677.1	654.7	700.0

Data Notes

Crude rates displayed

*Age group <45 does not include ages 0-14

Data Source

Cancer data provided by the Utah Cancer Registry, supported by the National Cancer Institute (HHSN261201800016I), the U.S. Center for Disease Control and Prevention (NU58DP0063200), the University of Utah, and Huntsman Cancer Foundation

References and Community Resources

Cancer Information Service: <http://www.cancer.gov>

American Cancer Society: <http://www.cancer.org>

National Cancer Institute: <http://www.cancer.gov>

Huntsman Cancer Institute: <http://www.huntsmancancer.org>

Utah Cancer Control Program: <http://www.cancerutah.org>

Utah Cancer Action Network: <http://www.ucan.cc>

More Resources and Links

Evidence-based community health improvement ideas and interventions may be found at the following sites:

- Centers for Disease Control and Prevention (CDC) WONDER [Database](#), a system for disseminating Public Health data and information.
- United States Census Bureau [data dashboard](#).
- Utah healthy Places Index [Map](#), evidence-based and peer-reviewed and supports efforts to prioritize equitable community investments, develop critical programs and policies across the state, and much more.
- [County Health Rankings](#)
- Kaiser Family Foundation's [StateHealthFacts.org](#)
- Medical literature can be queried at [PubMed](#)library.

Page Content Updated On 01/06/2023, Published on 02/07/2023

The Utah Cancer Control Program (UCCP), Utah Department of Health and Human Services Cancer Control Program, Phone: 801-538-6157, Fax: 801-536-0172, Website: www.cancerutah.org, Contact: cancer@utah.gov