

IBIS-PH - Complete Health Indicator Report

 ibis.health.utah.gov/ibisph-view/indicator/complete_profile/ProsCADth.html

Complete Health Indicator Report of Prostate Cancer Deaths

Definition

The rate of death from cancer of the prostate (ICD-10: C61) per 100,000 men.

Numerator

The number of deaths due to prostate cancer for a given year (ICD-10: C61).

Denominator

The male population in Utah or the U.S. for a given year.

Why Is This Important?

Prostate cancer is the second most commonly occurring form of cancer for men, and is the second leading cause of cancer death for men in both Utah and the U.S.

Healthy People Objective C-7:

Reduce the prostate cancer death rate
U.S. Target: 21.8 deaths per 100,000 males

Other Objectives

CSTE Chronic Disease Indicators

How Are We Doing?

In 2019, the Utah age-adjusted prostate cancer mortality rate was 23.2 deaths per 100,000 males. Tooele County Local Health District had the highest prostate cancer mortality rate at 26.1 per 100,000 and Southwest Local Health District had the lowest at 15.7 (see additional data views for additional differences between Utah Small Areas) from 2015-2019. There was not a significant difference across ethnic groups from 2017-2019. From 2015-2019, men who racially identified as Asian had a significantly lower rate of prostate cancer mortality (3.5 deaths per 100,000 males) compared to other races, though caution should be used in interpreting these rates as these estimates have a high coefficient of variation.

How Do We Compare With the U.S.?

The U.S. prostate cancer age-adjusted mortality rate has generally been decreasing over time, from 24.2 deaths per 100,000 males in 2007 to 18.9 deaths per 100,000 males in 2017. The Utah age-adjusted prostate cancer mortality rate trend has been more variable from year-to-year, though rates have generally been similar to the national rate. In 2017, the Utah age-adjusted prostate cancer mortality rate was 19.6 deaths per 100,000 males while the national rate was 18.9 deaths per 100,000 males.

What Is Being Done?

The Utah Department of Health initiated the Utah Cancer Action Network (UCAN), a statewide partnership whose goal is to reduce the burden of cancer. The mission of the UCAN is to lower cancer incidence and mortality in Utah through collaborative efforts directed toward cancer prevention and control. As a result of this planning process, objectives and strategies have been developed by community partners regarding the early detection of cervical, breast, and colorectal cancers as well as the promotion of physical activity, healthy eating habits, melanoma cancer prevention, and cancer survivorship advocacy.

Evidence-based Practices

Screening recommendations have changed over time.

Until recently, many doctors and professional organizations encouraged yearly PSA screening for men beginning at age 50.

However, as more has been learned about both the benefits and harms of prostate cancer screening, a number of organizations have begun to caution against routine population screening. Although some organizations continue to recommend PSA screening, there is widespread agreement that any man who is considering getting tested should first be informed in detail about the potential harms and benefits.

Since 2012 the U.S. Preventive Services Task Force (USPSTF) recommends against prostate-specific antigen (PSA)-based screening for prostate cancer.

Healthy diet, exercise, and lifestyle play an important role in cancer prevention.

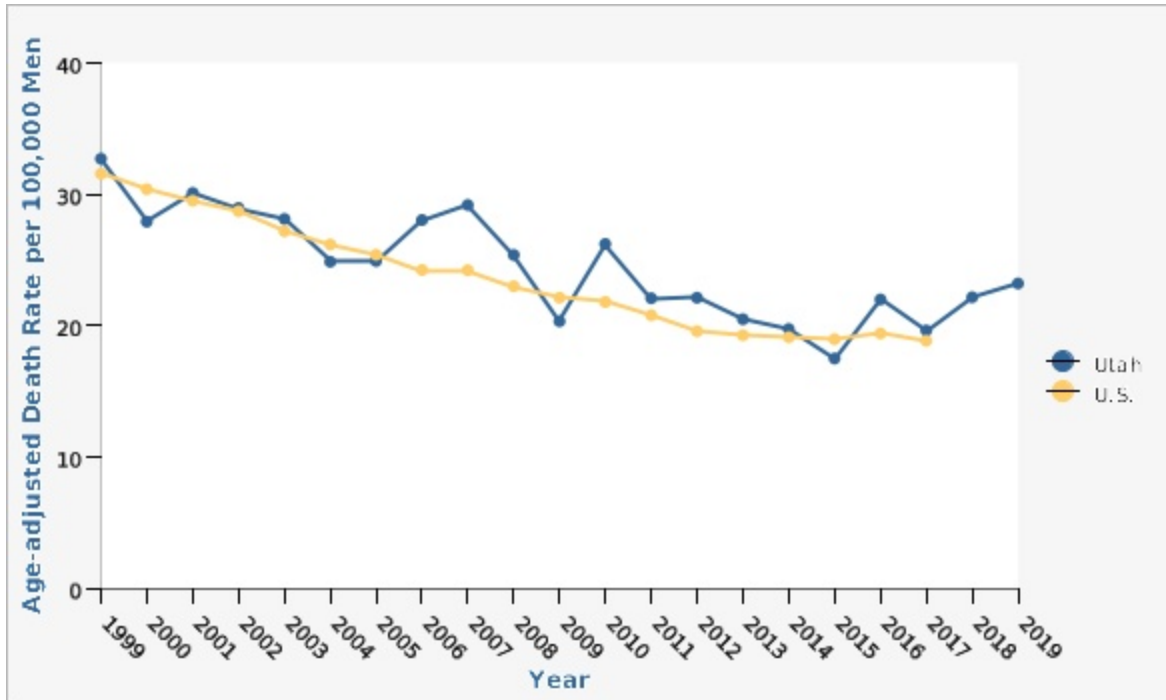
Available Services

Currently, Medicare provides coverage for an annual PSA test for all Medicare-eligible men age 50 and older. Many private insurers cover regular PSA screening tests as well. Check with your insurance provider and doctor's office to discuss when prostate cancer screening may be right for you.

Related Indicators

Graphical Data Views

Prostate Cancer Deaths per 100,000 Men by Year, Utah and U.S., 1999-2019



Utah vs. U.S. Year	Age-adjusted Death Rate per 100,000 Men	Lower Limit	Upper Limit
Utah 1999	32.7	28.2	37.8
Utah 2000	27.9	23.7	32.6
Utah 2001	30.1	25.8	34.9
Utah 2002	29.0	24.8	33.6
Utah 2003	28.1	24.1	32.6
Utah 2004	24.9	21.2	29.0
Utah 2005	24.9	21.3	29.0
Utah 2006	28.0	24.2	32.3

Utah vs. U.S. Year	Age-adjusted Death Rate per 100,000 Men	Lower Limit	Upper Limit	
Utah	2007	29.2	25.4	33.4
Utah	2008	25.4	22.0	29.2
Utah	2009	20.3	17.3	23.8
Utah	2010	26.2	22.8	30.0
Utah	2011	22.1	19.0	25.5
Utah	2012	22.1	19.1	25.4
Utah	2013	20.5	17.7	23.6
Utah	2014	19.8	17.0	22.8
Utah	2015	17.5	15.0	20.3
Utah	2016	22.0	19.2	25.1
Utah	2017	19.6	17.0	22.5
Utah	2018	22.2	19.5	25.1
Utah	2019	23.2	20.5	26.2
U.S.	1999	31.6	31.2	31.9
U.S.	2000	30.4	30.0	30.7
U.S.	2001	29.5	29.2	29.8
U.S.	2002	28.7	28.4	29.0
U.S.	2003	27.2	26.9	27.5
U.S.	2004	26.2	25.9	26.5
U.S.	2005	25.4	25.1	25.7
U.S.	2006	24.2	24.0	24.5
U.S.	2007	24.2	24.0	24.5
U.S.	2008	23.0	22.7	23.3
U.S.	2009	22.1	21.9	22.4
U.S.	2010	21.8	21.6	22.1

Utah vs. U.S. Year	Age-adjusted Death Rate per 100,000 Men	Lower Limit	Upper Limit	
U.S.	2011	20.8	20.5	21.0
U.S.	2012	19.6	19.3	19.8
U.S.	2013	19.3	19.0	19.5
U.S.	2014	19.1	18.9	19.4
U.S.	2015	19.0	18.7	19.2
U.S.	2016	19.4	19.2	19.6
U.S.	2017	18.8	18.6	19.1

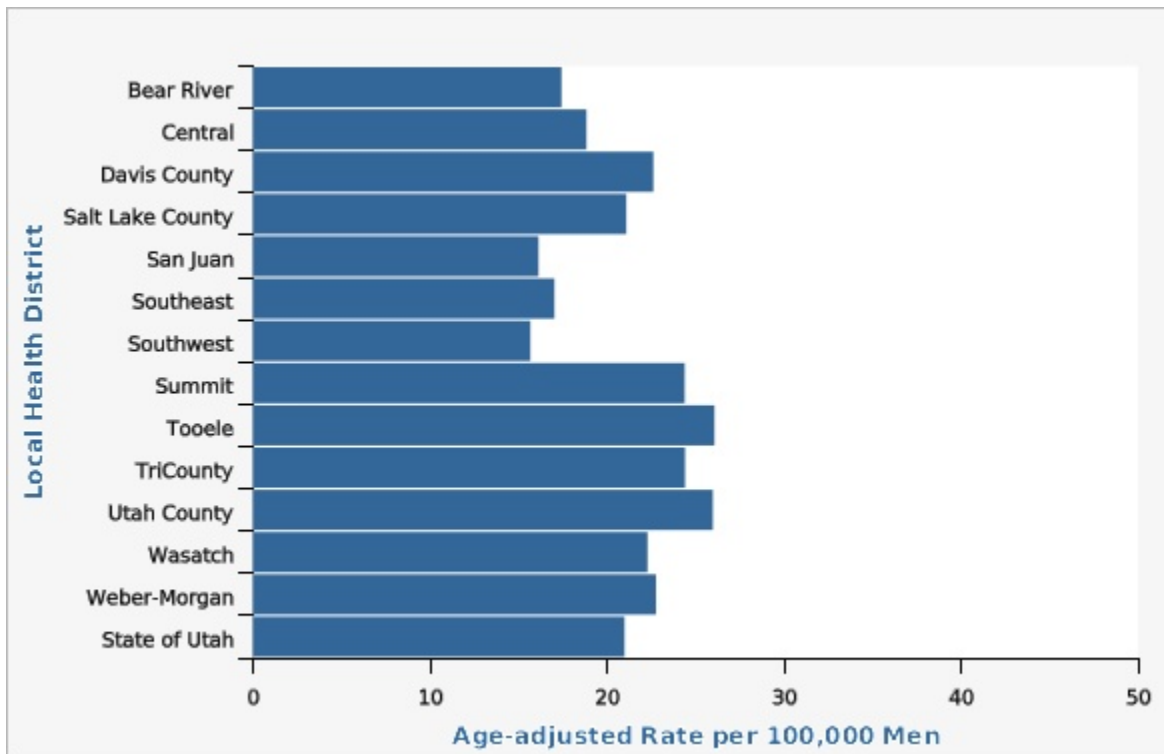
Data Notes

ICD-10 codes used to define prostate cancer: C61.
Age-adjusted to U.S. 2000 standard population.

Data Sources

- Utah Death Certificate Database, Office of Vital Records and Statistics, Utah Department of Health
- Population Estimates: National Center for Health Statistics (NCHS) through a collaborative agreement with the U.S. Census Bureau, IBIS Version 2019
- U.S. Underlying Cause of Death Data: WONDER Online Database. Centers for Disease Control and Prevention, National Center for Health Statistics. Accessed at <http://wonder.cdc.gov/ucd-icd10.html>
- National Vital Statistics System, National Center for Health Statistics, U.S. Centers for Disease Control and Prevention

Prostate Cancer Deaths by Local Health District, Utah, 2015-2019



Local Health District	Age-adjusted Rate per 100,000 Men	Lower Limit	Upper Limit	Note
Bear River	17.4	13.2	22.7	
Central	18.8	13.4	25.8	
Davis County	22.6	18.8	27.0	
Salt Lake County	21.1	19.0	23.3	
San Juan	16.1	5.8	35.5	*
Southeast	17.0	10.1	26.8	
Southwest	15.7	13.0	18.7	
Summit	24.4	13.4	40.7	
Tooele	26.1	16.1	40.0	
TriCounty	24.4	15.9	35.8	
Utah County	26.0	22.4	30.0	
Wasatch	22.3	11.0	40.3	

Local Health District	Age-adjusted Rate per 100,000 Men	Lower Limit	Upper Limit	Note
Weber-Morgan	22.8	18.8	27.4	
State of Utah	21.0	19.8	22.3	

Data Notes

ICD-10 codes used to define prostate cancer: C61.

Age-adjusted to U.S. 2000 standard population.

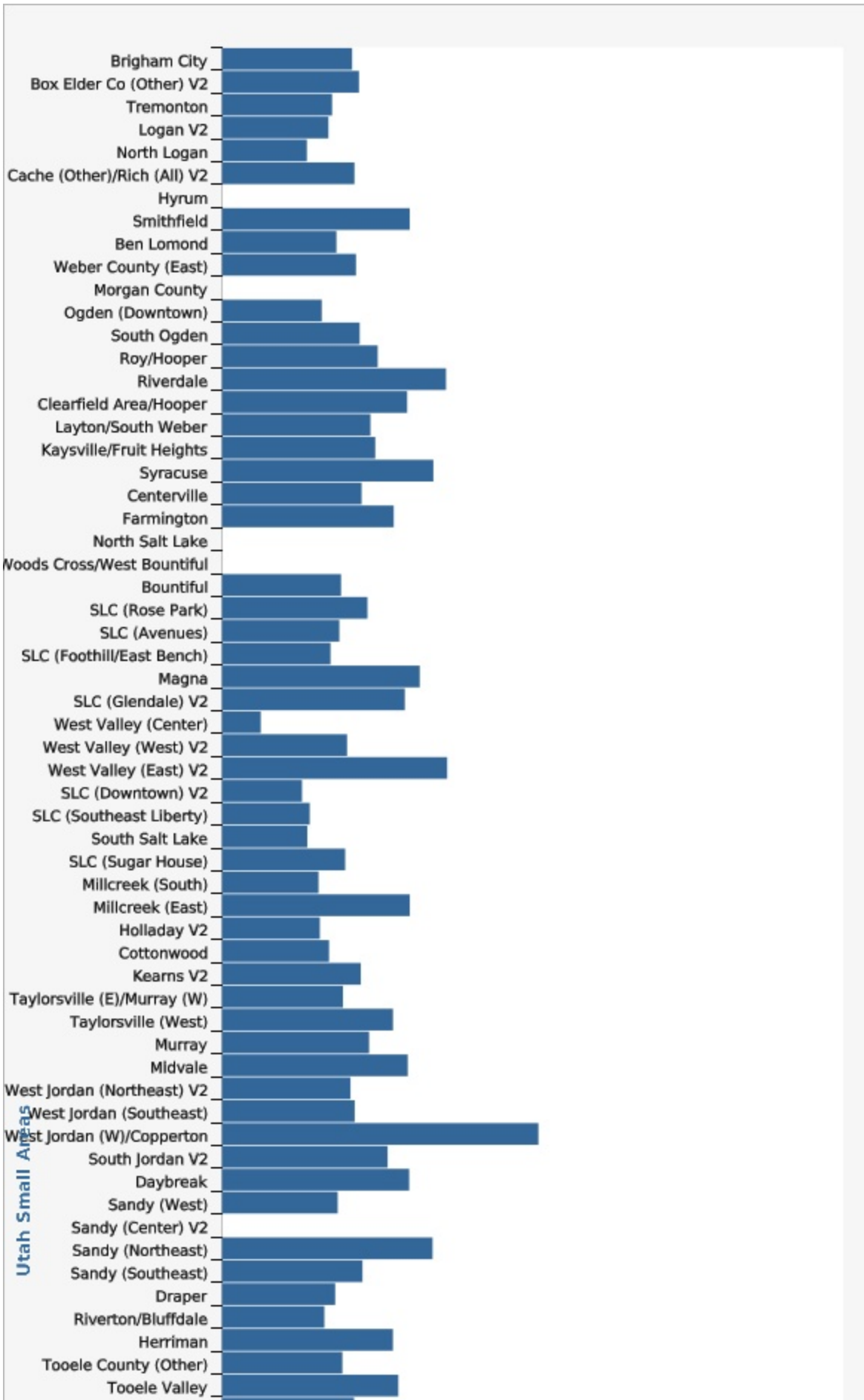
*Use caution in interpreting, the estimate has a relative standard error greater than 30% and does not meet UDOH standards for reliability. For more information, please go to <http://ibis.health.utah.gov/pdf/resource/DataSuppression.pdf>.

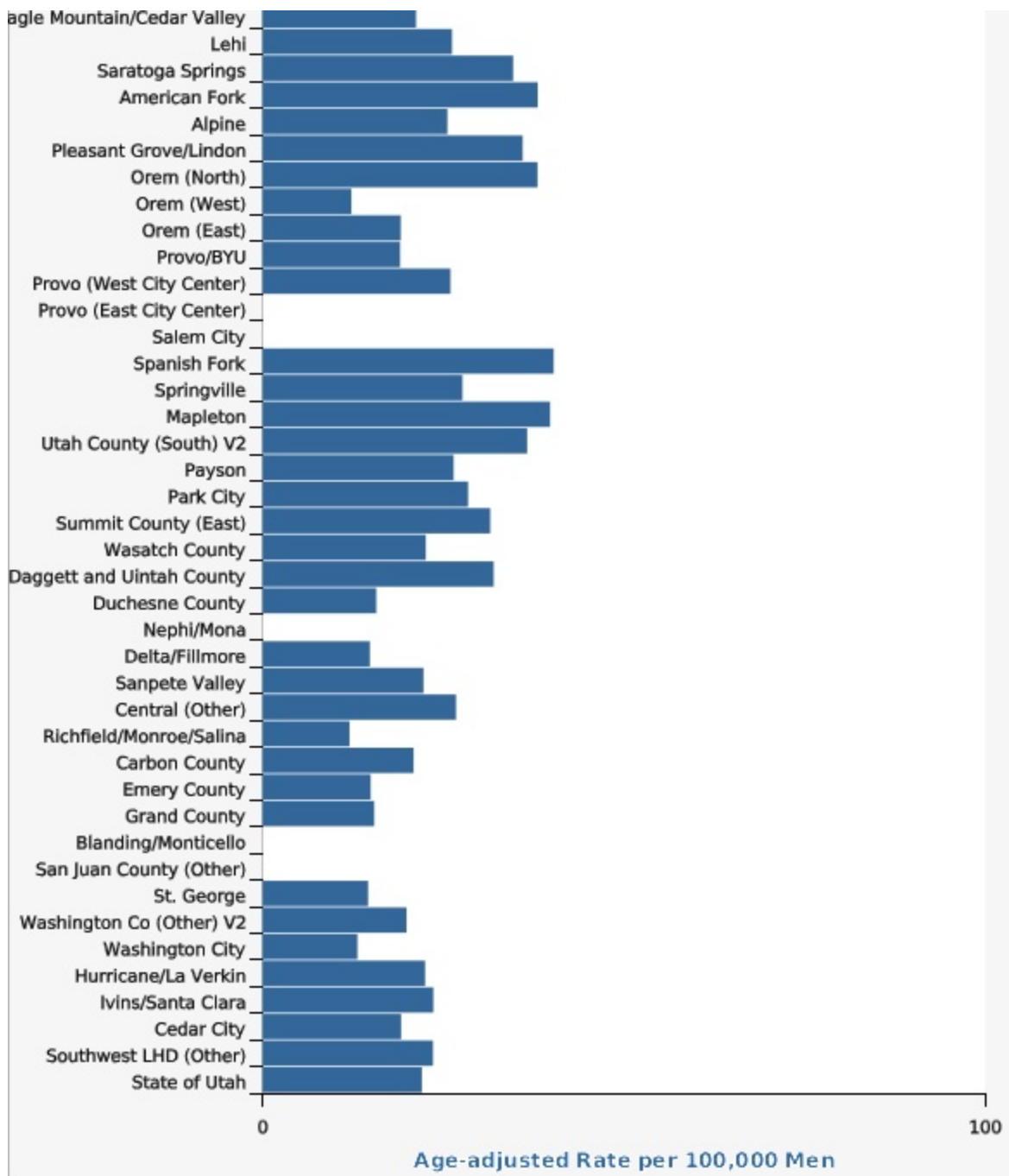
Note: Prior to 2015 San Juan County was part of the Southeast Local Health District. In 2015 the San Juan County Local Health District was formed. Data reported are for all years using the current boundaries.

Data Sources

- Utah Death Certificate Database, Office of Vital Records and Statistics, Utah Department of Health
- Population Estimates: National Center for Health Statistics (NCHS) through a collaborative agreement with the U.S. Census Bureau, IBIS Version 2019

Prostate Cancer Deaths by Utah Small Area, 2015-2019





Utah Small Areas

Utah Small Areas	Age-adjusted Rate per 100,000 Men	Lower Limit	Upper Limit	Note
Brigham City	21.0	10.4	37.5	*
Box Elder Co (Other) V2	22.1	7.0	52.2	*
Tremonton	17.7	5.8	41.4	*

Utah Small Areas	Age-adjusted Rate per 100,000 Men	Lower Limit	Upper Limit	Note
Logan V2	17.1	9.3	28.8	
North Logan	13.7	4.4	32.0	*
Cache (Other)/Rich (All) V2	21.3	9.5	41.2	*
Hyrum	**			**
Smithfield	30.2	11.0	66.0	*
Ben Lomond	18.4	11.1	28.7	
Weber County (East)	21.6	12.7	34.2	
Morgan County	**			**
Ogden (Downtown)	16.1	7.6	29.8	*
South Ogden	22.2	13.5	34.4	
Roy/Hooper	25.1	15.4	38.5	
Riverdale	36.1	22.3	55.2	
Clearfield Area/Hooper	29.8	18.2	46.1	
Layton/South Weber	23.9	15.6	35.0	
Kaysville/Fruit Heights	24.7	13.3	41.9	
Syracuse	34.0	14.7	67.2	*
Centerville	22.5	9.6	44.5	*
Farmington	27.6	11.5	55.9	*
North Salt Lake	**			**
Woods Cross/West Bountiful	**			**
Bountiful	19.2	12.9	27.4	
SLC (Rose Park)	23.4	11.5	42.4	*
SLC (Avenues)	18.9	9.4	34.0	*

Utah Small Areas	Age-adjusted Rate per 100,000 Men	Lower Limit	Upper Limit	Note
SLC (Foothill/East Bench)	17.5	8.7	31.4	
Magna	31.8	13.8	62.4	*
SLC (Glendale) V2	29.4	13.3	56.3	*
West Valley (Center)	6.2	2.2	13.9	*
West Valley (West) V2	20.1	6.0	49.3	*
West Valley (East) V2	36.2	22.1	56.0	
SLC (Downtown) V2	12.9	5.8	24.8	*
SLC (Southeast Liberty)	14.1	3.8	36.2	*
South Salt Lake	13.8	4.7	31.2	*
SLC (Sugar House)	19.8	11.3	32.2	
Millcreek (South)	15.6	8.4	26.4	
Millcreek (East)	30.2	19.1	45.5	
Holladay V2	15.8	8.5	26.6	
Cottonwood	17.2	10.9	25.9	
Kearns V2	22.4	10.3	42.3	*
Taylorsville (E)/Murray (W)	19.5	9.9	34.4	
Taylorsville (West)	27.5	15.0	46.4	
Murray	23.7	14.2	37.2	
Midvale	29.9	17.0	48.8	
West Jordan (Northeast) V2	20.7	8.5	42.2	*
West Jordan (Southeast)	21.4	9.0	42.8	*
West Jordan (W)/Copperton	50.9	22.1	100.0	*

Utah Small Areas	Age-adjusted Rate per 100,000 Men	Lower Limit	Upper Limit	Note
South Jordan V2	26.7	16.0	41.8	
Daybreak	30.1	9.7	70.6	*
Sandy (West)	18.6	8.8	34.5	*
Sandy (Center) V2	**			**
Sandy (Northeast)	33.9	19.2	55.3	
Sandy (Southeast)	22.6	10.8	41.6	
Draper	18.2	7.4	37.2	*
Riverton/Bluffdale	16.5	7.1	32.7	*
Herriman	27.5	9.4	62.3	*
Tooele County (Other)	19.4	4.9	51.4	*
Tooele Valley	28.4	16.5	45.4	
Eagle Mountain/Cedar Valley	21.3	5.0	58.6	*
Lehi	26.2	14.1	44.7	
Saratoga Springs	34.7	9.3	89.7	*
American Fork	38.1	24.4	56.7	
Alpine	25.6	8.2	60.4	*
Pleasant Grove/Lindon	36.0	23.1	53.6	
Orem (North)	38.1	21.5	62.3	
Orem (West)	12.3	4.4	27.1	*
Orem (East)	19.2	9.2	35.3	*
Provo/BYU	19.1	11.2	30.3	
Provo (West City Center)	26.0	10.9	52.2	*
Provo (East City Center)	**			**

Utah Small Areas	Age-adjusted Rate per 100,000 Men	Lower Limit	Upper Limit	Note
Salem City	**			**
Spanish Fork	40.3	23.6	64.3	
Springville	27.7	14.7	47.5	
Mapleton	39.8	14.3	87.7	*
Utah County (South) V2	36.6	11.6	86.9	*
Payson	26.5	12.4	49.6	*
Park City	28.5	12.3	56.2	
Summit County (East)	31.5	11.9	67.5	*
Wasatch County	22.6	11.2	40.6	
Daggett and Uintah County	32.0	19.3	49.9	
Duchesne County	15.8	6.0	33.7	*
Nephi/Mona	**			**
Delta/Fillmore	14.9	3.9	38.9	*
Sanpete Valley	22.3	10.4	41.9	*
Central (Other)	26.8	15.7	42.7	
Richfield/Monroe/Salina	12.1	3.9	28.2	*
Carbon County	20.9	10.3	37.8	*
Emery County	15.0	3.8	39.5	*
Grand County	15.5	4.0	40.5	*
Blanding/Monticello	**			**
San Juan County (Other)	**			**
St. George	14.6	10.7	19.6	
Washington Co (Other) V2	20.0	9.1	38.0	*

Utah Small Areas	Age-adjusted Rate per 100,000 Men	Lower Limit	Upper Limit	Note
Washington City	13.2	6.0	25.0	*
Hurricane/La Verkin	22.5	12.4	37.6	
Ivins/Santa Clara	23.7	11.7	42.7	*
Cedar City	19.2	10.1	33.1	
Southwest LHD (Other)	23.6	13.6	38.2	
State of Utah	22.1	20.8	23.4	

Data Notes

ICD-10 codes used to define prostate cancer: C61.

Age-adjusted to U.S. 2000 standard population.

*Use caution in interpreting, the estimate has a relative standard error greater than 30% and does not meet UDOH standards for reliability. For more information, please go to <http://ibis.health.utah.gov/pdf/resource/DataSuppression.pdf>

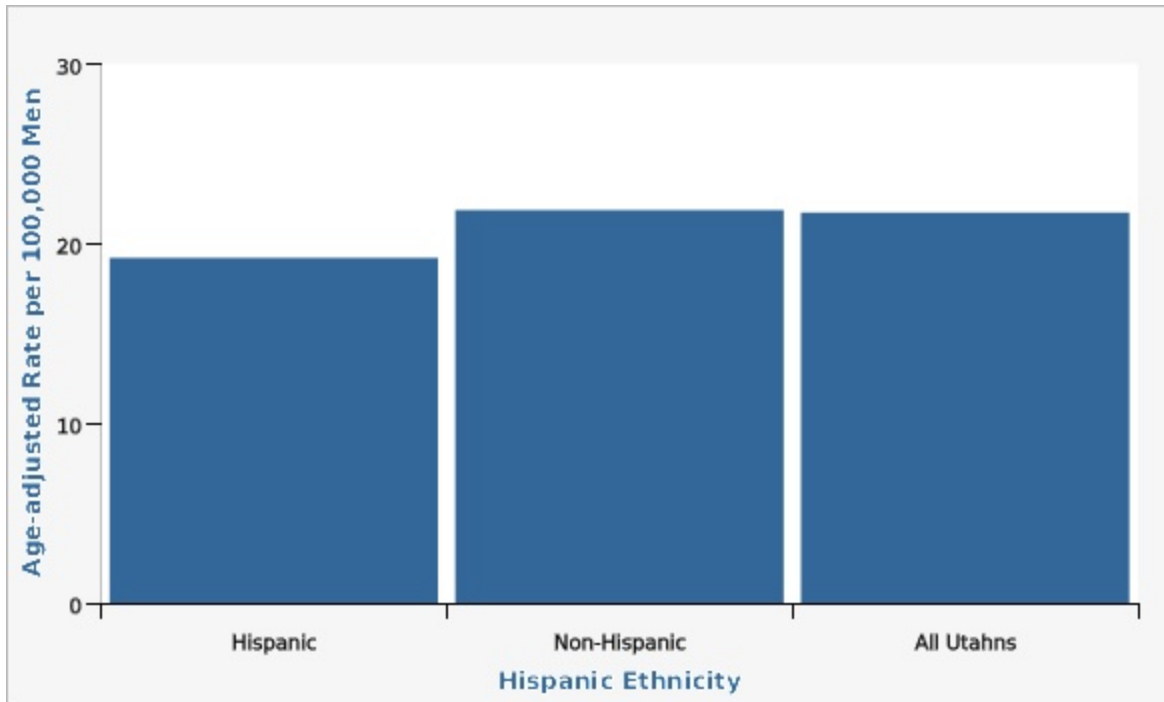
**The estimate has been suppressed because 1) the relative standard error is greater than 50% or the relative standard error can't be determined or 2) the observed number of events is very small and not appropriate for publication.

A description of the Utah Small Areas and details about Small Area reclassification may be found on IBIS at the following URL: <https://ibis.health.utah.gov/resource/Guidelines.html>.

Data Sources

- Utah Death Certificate Database, Office of Vital Records and Statistics, Utah Department of Health
- Population estimates produced by the UDOH Center for Health Data and Informatics. Linear interpolation of U.S. Census Bureau and ESRI ZIP Code data provided annual population estimates for ZIP Code areas by sex and age groups, IBIS Version 2019

Prostate Cancer Deaths per 100,000 Men by Ethnicity, Utah, 2017-2019



Hispanic Ethnicity	Age-adjusted Rate per 100,000 Men	Lower Limit	Upper Limit
Hispanic	19.2	13.1	27.1
Non-Hispanic	21.9	20.3	23.6
All Utahns	21.7	20.2	23.4

Data Notes

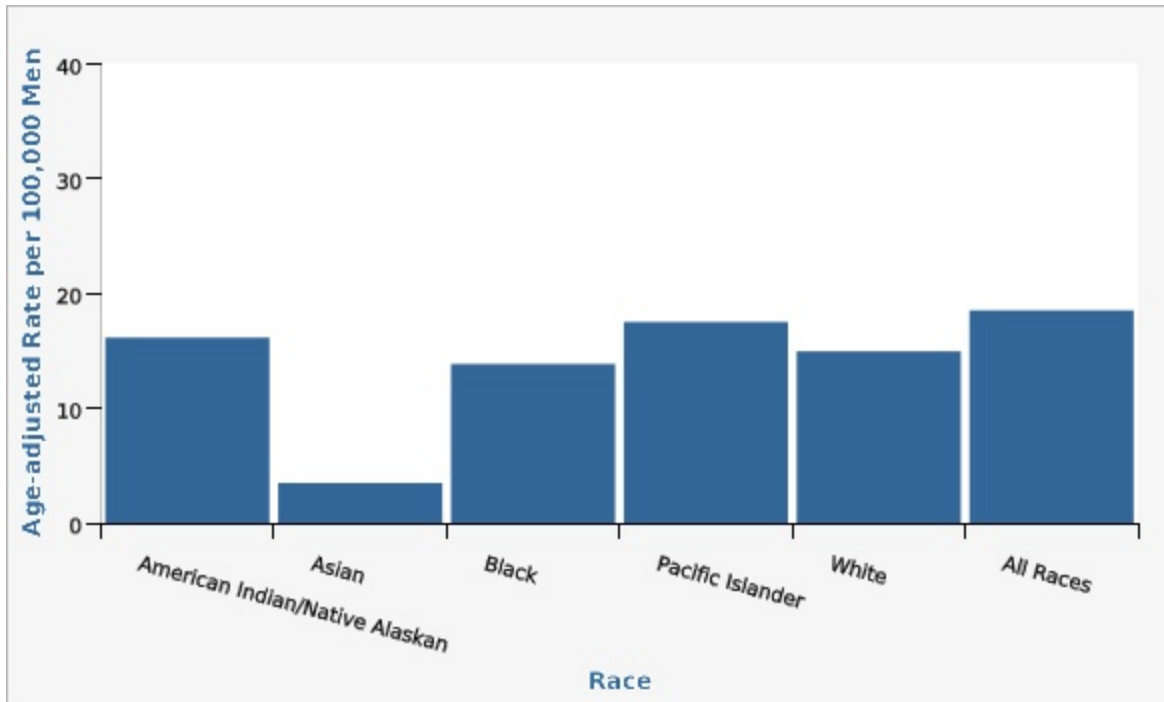
ICD-10 codes used to define prostate cancer: C61.

Rates are age-adjusted to the 2000 U.S. standard population using 10 age groups.

Data Sources

- Utah Death Certificate Database, Office of Vital Records and Statistics, Utah Department of Health
- Population Estimates by Age, Sex, Race, and Hispanic Origin for Counties in Utah, U.S. Bureau of the Census, IBIS Version 2019

Prostate Cancer Deaths per 100,000 Men by Race, Utah, 2015-2019



Race	Age-adjusted Rate per 100,000 Men	Lower Limit	Upper Limit	Note
American Indian/Native Alaskan	16.2	6.9	32.2	*
Asian	3.5	0.9	9.1	*
Black	13.9	4.9	30.7	*
Pacific Islander	17.5	6.9	36.6	*
White	15.0	14.0	16.0	
All Races	18.5	17.5	19.6	

Data Notes

ICD-10 codes used to define prostate cancer: C61.

Age-adjusted to U.S. 2000 standard population using 3 age groups, 0-44, 45-64, and 65+.

*Use caution in interpreting, the estimate has a relative standard error greater than 30% and does not meet UDOH standards for reliability. For more information, please go to <http://ibis.health.utah.gov/pdf/resource/DataSuppression.pdf>.

Data Sources

- Utah Death Certificate Database, Office of Vital Records and Statistics, Utah Department of Health
- Population Estimates by Age, Sex, Race, and Hispanic Origin for Counties in Utah, U.S. Bureau of the Census, IBIS Version 2019

References and Community Resources

Utah Cancer Control Program: <http://www.cancerutah.org>

Utah Cancer Action Network: <http://www.ucan.cc>

American Cancer Society: <http://www.cancer.org>

National Cancer Institute: <http://www.cancer.gov>

Huntsman Cancer Institute: <http://www.huntsmancancer.org>

Centers for Disease Control and Prevention: <http://www.cdc.gov>

American Society of Clinical Oncology: <http://www.asco.org>

More Resources and Links

Evidence-based community health improvement ideas and interventions may be found at the following sites:

Additional indicator data by state and county may be found on these Websites:

- [CDC Prevention Status Reports for all 50 states](#)
- [County Health Rankings](#)
- Kaiser Family Foundation's [StateHealthFacts.org](#)
- CDC WONDER [DATA2010](#), the Healthy People 2010 Database.

Medical literature can be queried at the [PubMed](#) website.

Page Content Updated On 10/23/2020, Published on 01/05/2021

Cancer Control Program, Bureau of Health Promotion, Division of Disease Control and Prevention, Utah Department of Health, Salt Lake City, UT 84114-2107, Telephone: 801-538-6157, Fax: 801-536-0172, Website: www.cancerutah.org, Contact: Marie Nagata, Program Manager