

# IBIS-PH - Complete Health Indicator Report

---

 [ibis.health.utah.gov/ibisph-view/indicator/complete\\_profile/ProsCAInc.html](https://ibis.health.utah.gov/ibisph-view/indicator/complete_profile/ProsCAInc.html)

## Complete Health Indicator Report of Prostate Cancer Incidence

---

### Definition

---

The rate of prostate cancer incidence in Utah per 100,000 males.

### Numerator

---

The number of incidents of prostate cancer among Utah men for a given time period.

### Denominator

---

The population of Utah for a specific time period.

### Why Is This Important?

---

Prostate cancer is the most commonly occurring form of cancer (excluding skin cancer) among men and is the second leading cause of cancer related death for men in Utah. All men over the age of 40 should visit their doctor for routine health visits annually, which may include a discussion on prostate health.

### Healthy People Objective C-19:

---

Increase the proportion of men who have discussed the advantages and disadvantages of the prostate-specific antigen (PSA) test to screen for prostate cancer with their health care provider

U.S. Target: 15.9 percent

### How Are We Doing?

---

In 2017, Utah's age-adjusted incidence rate of prostate cancer was 112.2 cases per 100,000 men. From 2015-2017, the highest rates of age-adjusted prostate cancer incidence were found in Summit County LHD (171.2 cases per 100,000 men) and Tooele County LHD (166.1 cases per 100,000 men), while the lowest rates of age-adjusted prostate cancer incidence were found in San Juan LHD (31.4 cases per 100,000 men) and Central Utah LHD (88.1 cases per 100,000 men). These differences were statistically significant compared to the state age-adjusted rate during the same time period. For more information on the geographical distribution of prostate cancer incidence, see the Utah Small Areas view. From 2014-2016 Utah Hispanic men had a significantly lower age-adjusted incidence rate of prostate cancer

(80.9 cases per 100,000 men) compared to non-Hispanic men (110.3 cases per 100,000 men). Men who racially identified as Native Hawaiian/Other Pacific Islander or Black/African American had significantly higher rates of prostate cancer incidence (154.8 cases and 164.8 cases per 100,000 men, respectively) compared to Asian and American Indian/Alaskan Native men who had the lowest rates of prostate cancer incidence (43.6 cases and 38.9 cases per 100,000 men, respectively). Incidence of prostate cancer increases significantly with age. The highest rates of prostate cancer incidence in Utah are found in males older than 65 years of age (632.9 cases per 100,000 men), while rates for men age 45-64 are also high (182.4 cases per 100,000 men). Prostate cancer is very rare among men younger than 45 years of age (0.6 cases per 100,000 men).

---

## How Do We Compare With the U.S.?

In 2016 (the most recent comparison data available), Utah's age-adjusted incidence rate of prostate cancer of 113.2 cases per 100,000 males was significantly higher than the U.S. rate of 101.4 cases per 100,000 males.

---

## What Is Being Done?

The Utah Department of Health initiated the Utah Cancer Action Network (UCAN), a statewide partnership whose goal is to reduce the burden of cancer. The mission of the UCAN is to lower cancer incidence and mortality in Utah through collaborative efforts directed toward cancer prevention and control. As a result of this planning process, objectives and strategies have been developed by community partners regarding the early detection of cervical, breast, and colorectal cancers as well as the promotion of physical activity, healthy eating habits, melanoma cancer prevention and cancer survivorship advocacy.

---

## Evidence-based Practices

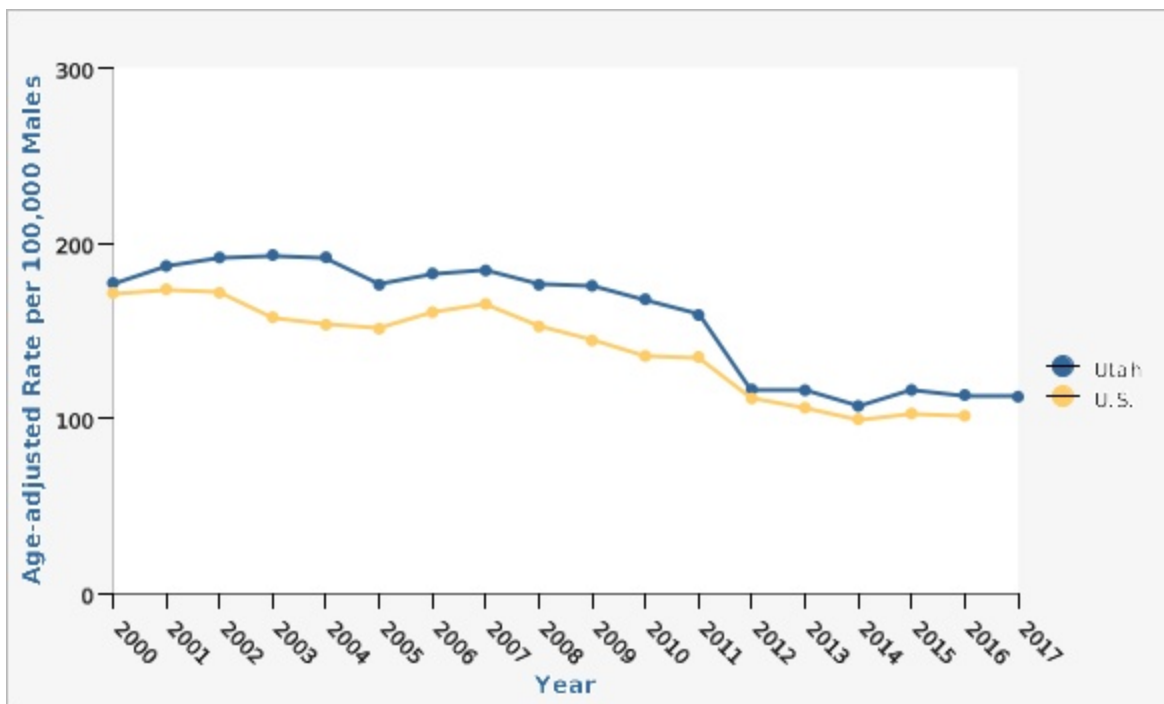
Screening recommendations have changed over time. Until recently, many doctors and professional organizations encouraged yearly prostate-specific antigen (PSA) screening for men beginning at age 50. However, as more has been learned about both the benefits and harms of prostate cancer screening, a number of organizations have begun to caution against routine population screening. Although some organizations continue to recommend PSA screening, there is widespread agreement that any man who is considering getting tested should first be informed in detail about the potential harms and benefits. Currently, Medicare provides coverage for an annual PSA test for all Medicare-eligible men age 50 and older. Many private insurers cover PSA screening as well. Since 2012 the U.S. Preventive Services Task Force (USPSTF) recommends against prostate-specific antigen (PSA)-based screening for prostate cancer. Healthy diet, exercise, and lifestyle play an important role in cancer prevention.

---

## Related Indicators

## Graphical Data Views

### Prostate Cancer Incidence by Year, Utah and U.S., 2000-2017



#### Utah vs. U.S. Year

Year	Age-adjusted Rate per 100,000 Males	Lower Limit	Upper Limit
Utah 2000		177.2	167.4 187.4
Utah 2001		187.0	177.1 197.3
Utah 2002		191.8	182.0 202.0
Utah 2003		193.2	183.4 203.4
Utah 2004		191.9	182.4 201.8
Utah 2005		176.2	167.3 185.5
Utah 2006		182.7	173.8 191.9
Utah 2007		184.3	175.5 193.4
Utah 2008		176.2	167.8 184.9
Utah 2009		175.6	167.4 184.2

<b>Utah vs. U.S. Year</b>	<b>Age-adjusted Rate per 100,000 Males</b>	<b>Lower Limit</b>	<b>Upper Limit</b>	
<b>Utah</b>	<b>2010</b>	167.9	160.0	176.1
<b>Utah</b>	<b>2011</b>	159.0	151.4	166.8
<b>Utah</b>	<b>2012</b>	116.5	110.2	123.1
<b>Utah</b>	<b>2013</b>	116.0	109.8	122.5
<b>Utah</b>	<b>2014</b>	106.9	101.1	113.1
<b>Utah</b>	<b>2015</b>	116.2	110.2	122.4
<b>Utah</b>	<b>2016</b>	113.2	107.4	119.3
<b>Utah</b>	<b>2017</b>	112.2	106.5	118.1
<b>U.S.</b>	<b>2000</b>	171.5	170.8	172.3
<b>U.S.</b>	<b>2001</b>	173.7	172.9	174.4
<b>U.S.</b>	<b>2002</b>	171.6	170.9	172.4
<b>U.S.</b>	<b>2003</b>	157.6	157.0	158.4
<b>U.S.</b>	<b>2004</b>	153.4	152.7	154.1
<b>U.S.</b>	<b>2005</b>	151.1	150.4	151.7
<b>U.S.</b>	<b>2006</b>	160.5	159.9	161.2
<b>U.S.</b>	<b>2007</b>	165.2	164.6	165.9
<b>U.S.</b>	<b>2008</b>	152.4	151.8	153.1
<b>U.S.</b>	<b>2009</b>	144.4	143.8	145.1
<b>U.S.</b>	<b>2010</b>	135.5	134.9	136.1
<b>U.S.</b>	<b>2011</b>	135.0	134.4	135.5
<b>U.S.</b>	<b>2012</b>	111.3	110.8	111.8
<b>U.S.</b>	<b>2013</b>	106.0	105.5	106.4
<b>U.S.</b>	<b>2014</b>	99.5	99.0	99.9
<b>U.S.</b>	<b>2015</b>	102.7	102.2	103.2
<b>U.S.</b>	<b>2016</b>	101.4	100.9	101.8

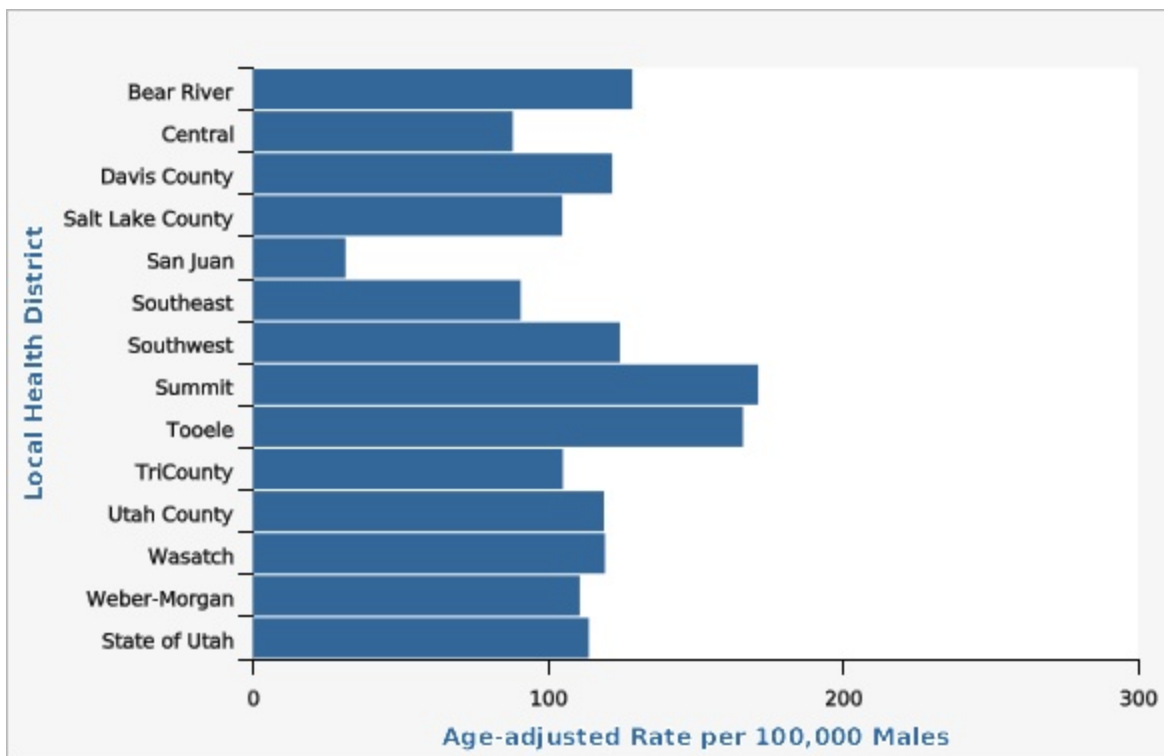
## Data Notes

^ ^Age-adjusted to U.S. 2000 population. [[br]] ^ ^\*U.S. Data available through 2016

## Data Sources

- Cancer data provided by the Utah Cancer Registry, supported by the National Cancer Institute (HHSN261201800016I), the U.S. Center for Disease Control and Prevention (NU58DP0063200), the University of Utah, and Huntsman Cancer Foundation
- Population Estimates: National Center for Health Statistics (NCHS) through a collaborative agreement with the U.S. Census Bureau, IBIS Version 2017
- U.S. Cancer Statistics: WONDER Online Database. United States Department of Health and Human Services, Centers for Disease Control and Prevention and National Cancer Institute. Accessed at [<http://wonder.cdc.gov/cancer.html>]

## Prostate Cancer Incidence by Local Health District, Utah, 2015-2017



Local Health District	Age-adjusted Rate per 100,000 Males	Lower Limit	Upper Limit	Note
Bear River	128.6	113.9	144.6	
Central	88.1	72.8	105.6	

Local Health District	Age-adjusted Rate per 100,000 Males	Lower Limit	Upper Limit	Note
Davis County	121.8	111.1	133.2	
Salt Lake County	104.8	99.4	110.4	
San Juan	31.4	13.5	61.8	^
Southeast	90.7	70.6	114.8	^
Southwest	124.4	114.0	135.4	
Summit	171.2	137.5	210.7	
Tooele	166.1	137.0	199.5	
TriCounty	105.0	82.7	131.6	
Utah County	119.0	109.8	128.8	
Wasatch	119.3	89.4	156.0	
Weber-Morgan	110.8	100.0	122.4	
State of Utah	113.8	110.4	117.3	

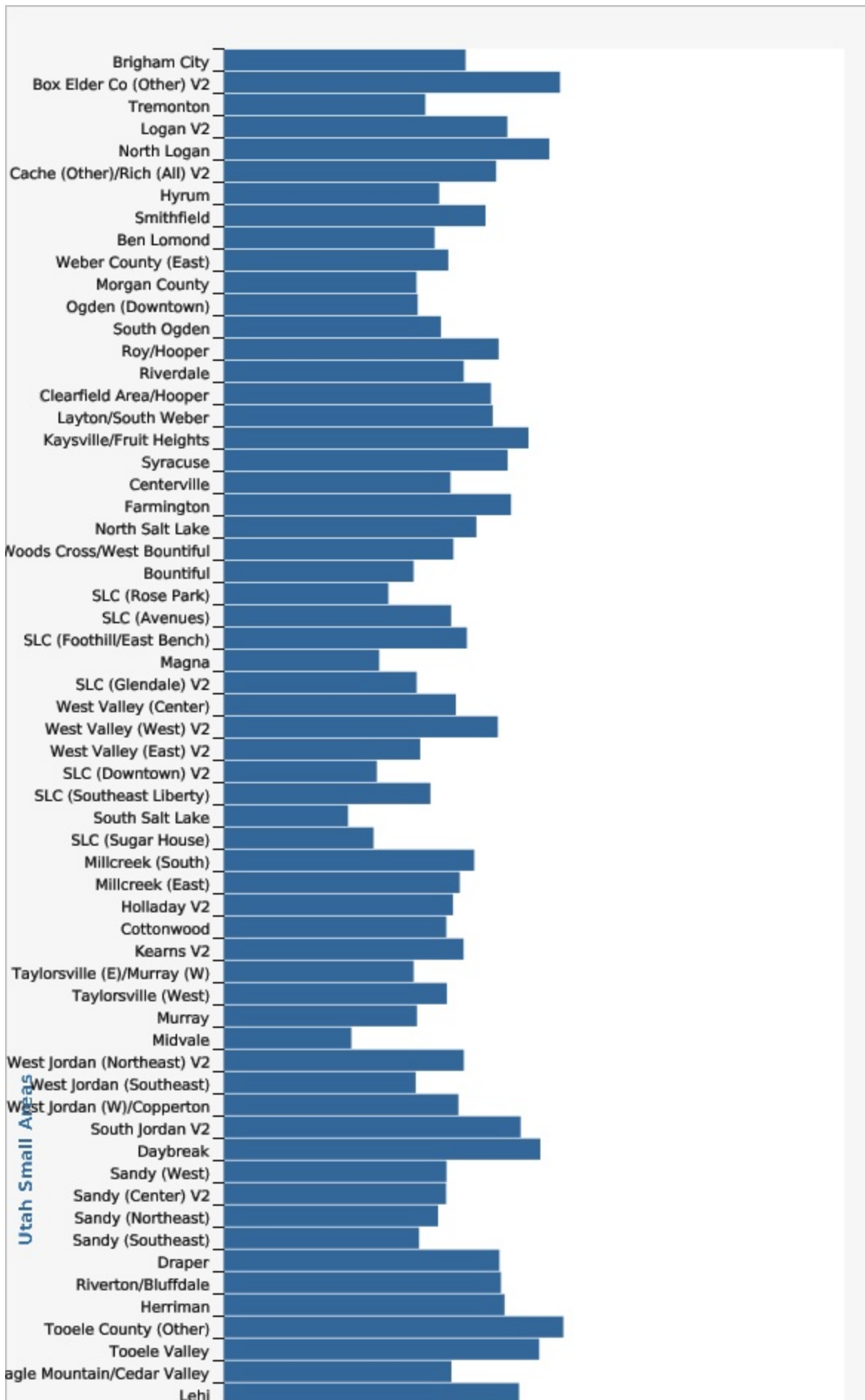
## Data Notes

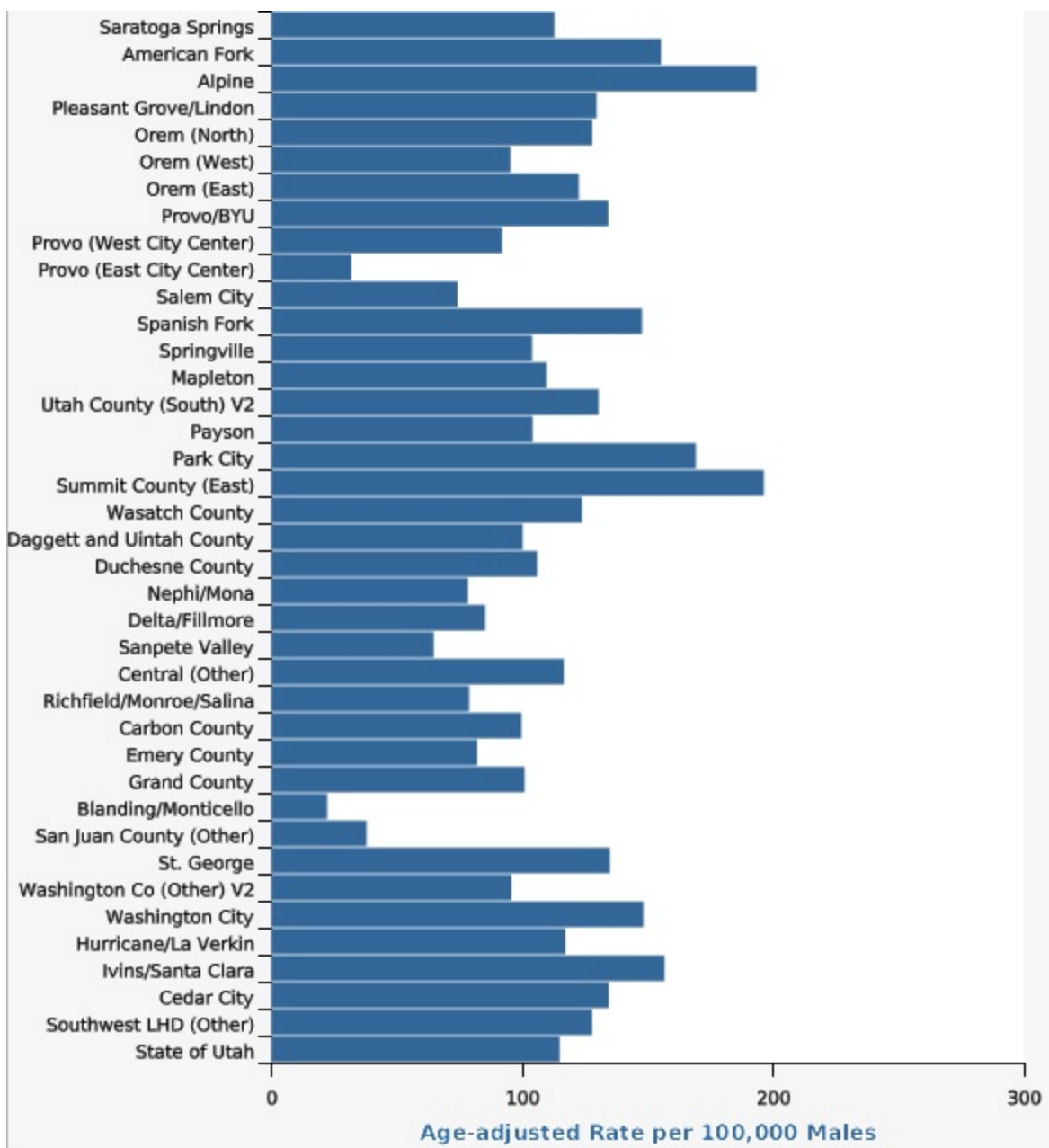
Age-adjusted to U.S. 2000 population.   
 ^ ^ ^ Prior to 2015 San Juan County was part of the Southeast Local Health District. In 2015 the San Juan County Local Health District was formed. Data reported are for all years using the current boundaries.

## Data Sources

- Cancer data provided by the Utah Cancer Registry, supported by the National Cancer Institute (HHSN261201800016I), the U.S. Center for Disease Control and Prevention (NU58DP0063200), the University of Utah, and Huntsman Cancer Foundation
- Population Estimates: National Center for Health Statistics (NCHS) through a collaborative agreement with the U.S. Census Bureau, IBIS Version 2017

## Prostate Cancer Incidence by Utah Small Area, 2015-2017





**Utah Small Areas**

Utah Small Areas	Age-adjusted Rate per 100,000 Males	Lower Limit	Upper Limit
Brigham City	116.9	84.0	158.4
Box Elder Co (Other) V2	162.6	108.3	234.5
Tremonton	97.4	60.7	148.2
Logan V2	137.1	106.8	173.3
North Logan	157.4	107.9	221.8



<b>Utah Small Areas</b>	<b>Age-adjusted Rate per 100,000 Males</b>	<b>Lower Limit</b>	<b>Upper Limit</b>
<b>Cache (Other)/Rich (All) V2</b>	131.7	95.7	176.7
<b>Hyrum</b>	104.1	48.4	195.4
<b>Smithfield</b>	126.6	76.0	198.0
<b>Ben Lomond</b>	101.9	80.4	127.5
<b>Weber County (East)</b>	108.5	83.2	139.1
<b>Morgan County</b>	93.1	52.6	152.7
<b>Ogden (Downtown)</b>	93.7	66.5	128.4
<b>South Ogden</b>	105.0	79.8	135.5
<b>Roy/Hooper</b>	132.9	104.1	167.1
<b>Riverdale</b>	116.0	84.0	156.3
<b>Clearfield Area/Hooper</b>	129.1	101.7	161.8
<b>Layton/South Weber</b>	130.0	107.0	156.6
<b>Kaysville/Fruit Heights</b>	147.3	113.7	187.7
<b>Syracuse</b>	137.2	90.9	198.8
<b>Centerville</b>	109.6	74.2	156.1
<b>Farmington</b>	138.9	95.5	195.2
<b>North Salt Lake</b>	122.1	74.0	189.8
<b>Woods Cross/West Bountiful</b>	111.0	60.1	187.4
<b>Bountiful</b>	91.8	71.8	115.6
<b>SLC (Rose Park)</b>	79.6	52.2	116.1
<b>SLC (Avenues)</b>	109.9	79.5	148.1
<b>SLC (Foothill/East Bench)</b>	117.5	84.5	159.2
<b>Magna</b>	75.1	42.9	122.0

<b>Utah Small Areas</b>	<b>Age-adjusted Rate per 100,000 Males</b>	<b>Lower Limit</b>	<b>Upper Limit</b>
<b>SLC (Glendale) V2</b>	93.2	56.7	144.6
<b>West Valley (Center)</b>	112.2	87.4	141.8
<b>West Valley (West) V2</b>	132.5	81.3	203.9
<b>West Valley (East) V2</b>	95.0	69.2	127.1
<b>SLC (Downtown) V2</b>	74.0	50.1	105.3
<b>SLC (Southeast Liberty)</b>	99.9	66.2	144.7
<b>South Salt Lake</b>	60.1	37.1	91.9
<b>SLC (Sugar House)</b>	72.4	50.2	101.1
<b>Millcreek (South)</b>	121.1	90.0	159.5
<b>Millcreek (East)</b>	114.1	83.6	152.0
<b>Holladay V2</b>	110.8	82.4	145.9
<b>Cottonwood</b>	107.6	86.2	132.7
<b>Kearns V2</b>	115.9	79.9	162.6
<b>Taylorsville (E)/Murray (W)</b>	91.8	66.1	124.2
<b>Taylorsville (West)</b>	107.8	79.0	143.8
<b>Murray</b>	93.4	68.1	125.0
<b>Midvale</b>	61.7	38.3	94.0
<b>West Jordan (Northeast) V2</b>	116.0	82.6	158.6
<b>West Jordan (Southeast)</b>	92.8	64.9	128.6
<b>West Jordan (W)/Copperton</b>	113.4	70.3	173.3
<b>South Jordan V2</b>	143.5	113.9	178.5
<b>Daybreak</b>	153.0	88.4	246.6
<b>Sandy (West)</b>	107.7	75.2	149.4

<b>Utah Small Areas</b>	<b>Age-adjusted Rate per 100,000 Males</b>	<b>Lower Limit</b>	<b>Upper Limit</b>
<b>Sandy (Center) V2</b>	107.5	77.0	145.9
<b>Sandy (Northeast)</b>	103.6	74.6	140.2
<b>Sandy (Southeast)</b>	94.4	69.6	125.1
<b>Draper</b>	133.2	100.4	173.4
<b>Riverton/Bluffdale</b>	134.0	99.0	177.3
<b>Herriman</b>	135.7	87.8	200.5
<b>Tooele County (Other)</b>	164.2	110.6	234.6
<b>Tooele Valley</b>	152.5	120.0	191.2
<b>Eagle Mountain/Cedar Valley</b>	110.0	50.5	208.5
<b>Lehi</b>	142.7	107.6	185.7
<b>Saratoga Springs</b>	112.8	66.7	178.5
<b>American Fork</b>	155.4	121.3	196.1
<b>Alpine</b>	193.4	129.4	278.1
<b>Pleasant Grove/Lindon</b>	129.6	100.4	164.7
<b>Orem (North)</b>	127.9	91.7	173.7
<b>Orem (West)</b>	95.4	64.9	135.2
<b>Orem (East)</b>	122.5	86.8	168.2
<b>Provo/BYU</b>	134.3	103.2	171.9
<b>Provo (West City Center)</b>	92.0	55.4	143.5
<b>Provo (East City Center)</b>	31.8	6.1	96.4
<b>Salem City</b>	74.2	34.7	138.6
<b>Spanish Fork</b>	147.7	108.8	196.0
<b>Springville</b>	104.0	72.2	145.0
<b>Mapleton</b>	109.6	59.4	185.1

<b>Utah Small Areas</b>	<b>Age-adjusted Rate per 100,000 Males</b>	<b>Lower Limit</b>	<b>Upper Limit</b>
<b>Utah County (South) V2</b>	130.4	70.5	220.7
<b>Payson</b>	104.1	69.6	149.8
<b>Park City</b>	169.2	127.9	219.6
<b>Summit County (East)</b>	196.4	129.0	286.4
<b>Wasatch County</b>	123.8	92.9	161.6
<b>Daggett and Uintah County</b>	100.2	72.7	134.8
<b>Duchesne County</b>	106.0	72.1	150.2
<b>Nephi/Mona</b>	78.3	34.9	151.3
<b>Delta/Fillmore</b>	85.2	48.3	139.4
<b>Sanpete Valley</b>	64.7	39.2	100.7
<b>Central (Other)</b>	116.6	86.1	154.4
<b>Richfield/Monroe/Salina</b>	78.9	47.9	122.3
<b>Carbon County</b>	99.7	69.4	138.6
<b>Emery County</b>	82.1	43.6	140.6
<b>Grand County</b>	100.9	62.5	154.2
<b>Blanding/Monticello</b>	22.2	4.6	65.0
<b>San Juan County (Other)</b>	37.9	10.3	97.0
<b>St. George</b>	134.9	117.3	154.4
<b>Washington Co (Other) V2</b>	95.7	61.1	142.9
<b>Washington City</b>	148.3	112.8	191.4
<b>Hurricane/La Verkin</b>	117.2	87.7	153.4
<b>Ivins/Santa Clara</b>	156.8	113.2	211.6
<b>Cedar City</b>	134.5	104.5	170.4
<b>Southwest LHD (Other)</b>	127.8	98.1	163.7

Utah Small Areas	Age-adjusted Rate per 100,000 Males	Lower Limit	Upper Limit
State of Utah	114.9	111.4	118.4

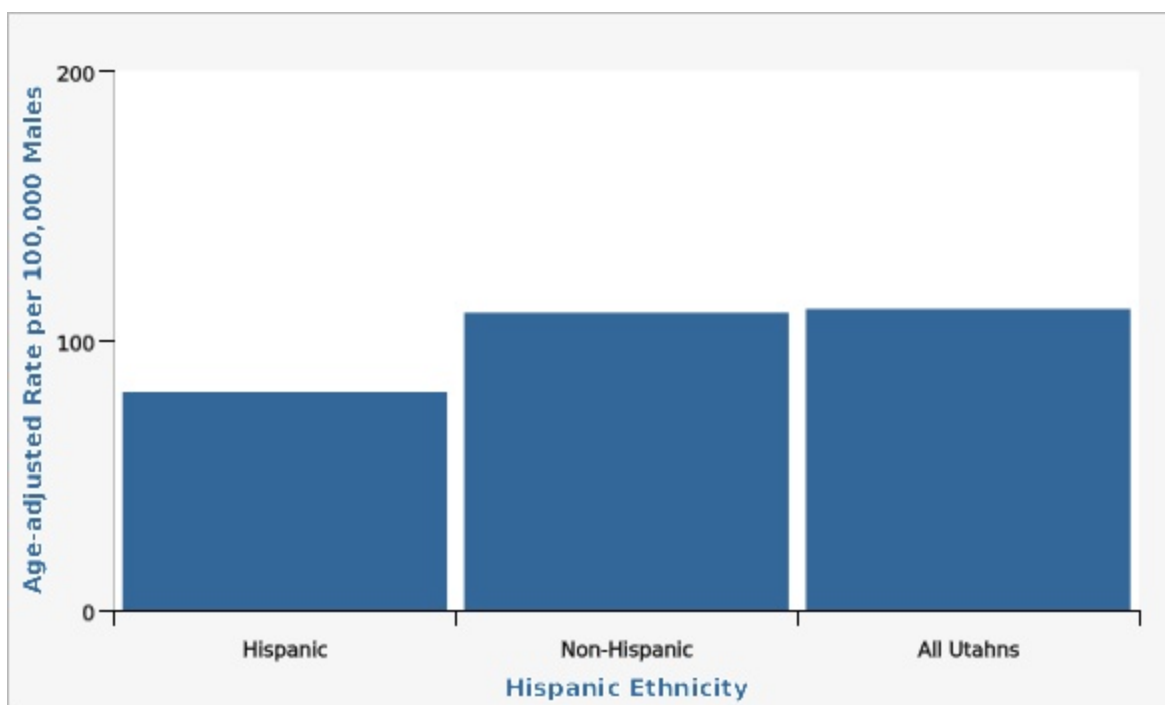
## Data Notes

Age adjusted to the U.S. 2000 standard population.

## Data Sources

- Cancer data provided by the Utah Cancer Registry, supported by the National Cancer Institute (HHSN261201800016I), the U.S. Center for Disease Control and Prevention (NU58DP0063200), the University of Utah, and Huntsman Cancer Foundation
- Population estimates produced by the UDOH Center for Health Data and Informatics. Linear interpolation of U.S. Census Bureau and ESRI ZIP Code data provided annual population estimates for ZIP Code areas by sex and age groups, IBIS Version 2017

## Prostate Cancer Incidence by Ethnicity, Utah, 2014-2016



Hispanic Ethnicity	Age-adjusted Rate per 100,000 Males	Lower Limit	Upper Limit
Hispanic	80.9	68.8	94.5

Hispanic Ethnicity	Age-adjusted Rate per 100,000 Males	Lower Limit	Upper Limit
Non-Hispanic	110.3	106.8	113.9
All Utahns	111.7	108.3	115.2

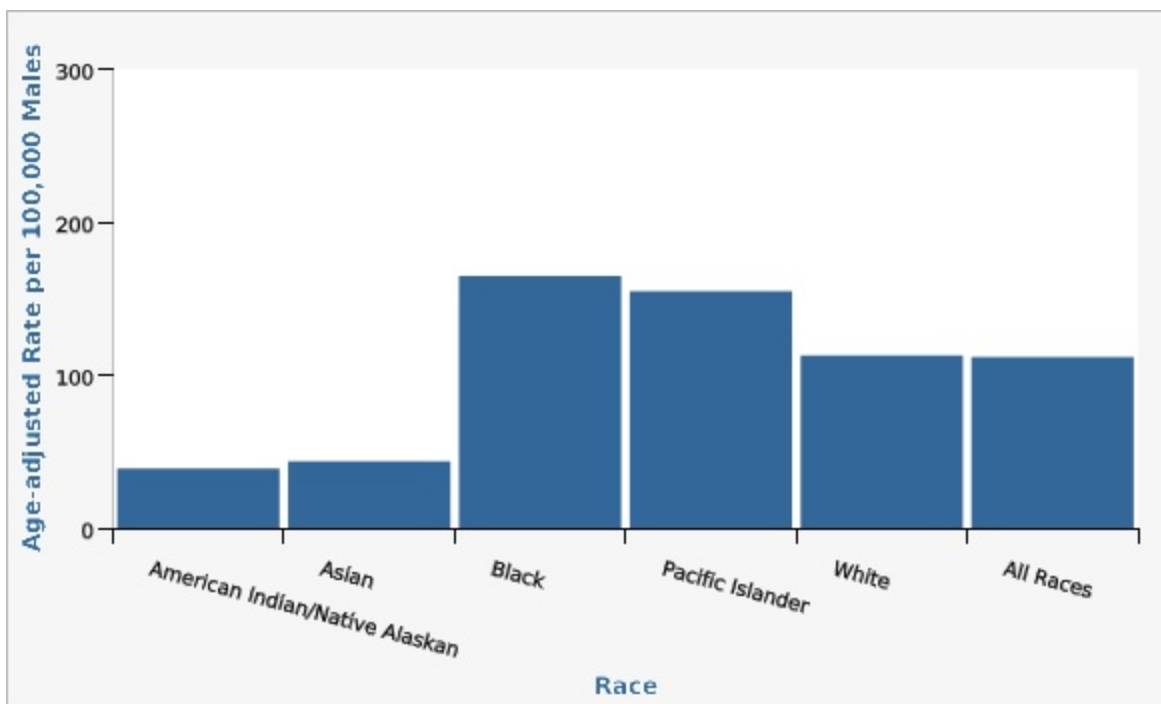
## Data Notes

Age-adjusted to U.S. 2000 population.

## Data Sources

- Cancer data provided by the Utah Cancer Registry, supported by the National Cancer Institute (HHSN261201800016I), the U.S. Center for Disease Control and Prevention (NU58DP0063200), the University of Utah, and Huntsman Cancer Foundation
- Population Estimates by Age, Sex, Race, and Hispanic Origin for Counties in Utah, U.S. Bureau of the Census, IBIS Version 2016

## Prostate Cancer Incidence by Race, Utah, 2014-2016



Race	Age-adjusted Rate per 100,000 Males	Lower Limit	Upper Limit
------	-------------------------------------	-------------	-------------

<b>Race</b>	<b>Age-adjusted Rate per 100,000 Males</b>	<b>Lower Limit</b>	<b>Upper Limit</b>
<b>American Indian/Native Alaskan</b>	38.9	20.0	68.1
<b>Asian</b>	43.6	28.9	63.1
<b>Black</b>	164.8	115.0	228.7
<b>Pacific Islander</b>	154.8	95.1	238.0
<b>White</b>	112.7	109.2	116.3
<b>All Races</b>	111.7	108.3	115.2

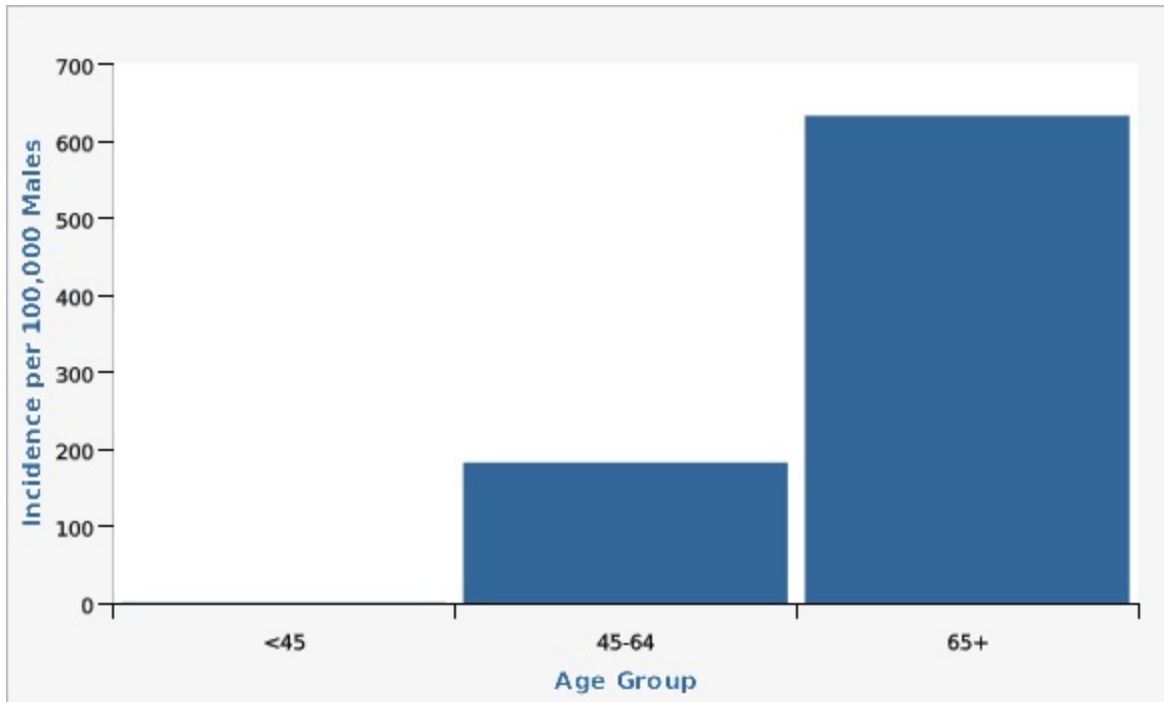
## Data Notes

Age-adjusted to U.S. 2000 population.

## Data Sources

- Cancer data provided by the Utah Cancer Registry, supported by the National Cancer Institute (HHSN261201800016I), the U.S. Center for Disease Control and Prevention (NU58DP0063200), the University of Utah, and Huntsman Cancer Foundation
- Population Estimates by Age, Sex, Race, and Hispanic Origin for Counties in Utah, U.S. Bureau of the Census, IBIS Version 2016

## Prostate Cancer Incidence by Age Group, Utah 2015-2017



Age Group	Incidence per 100,000 Males	Lower Limit	Upper Limit
<45	0.6	0.3	1.1
45-64	182.4	173.7	191.5
65+	632.9	609.7	656.7

## Data Sources

- Cancer data provided by the Utah Cancer Registry, supported by the National Cancer Institute (HHSN261201800016I), the U.S. Center for Disease Control and Prevention (NU58DP0063200), the University of Utah, and Huntsman Cancer Foundation
- Population Estimates: National Center for Health Statistics (NCHS) through a collaborative agreement with the U.S. Census Bureau, IBIS Version 2017

## References and Community Resources

Cancer Information Service: [<http://www.cancer.gov>][  
 American Cancer Society: [<http://www.cancer.org>][  
 National Cancer Institute: [<http://www.cancer.gov>][  
 Huntsman Cancer Institute: [<http://www.huntsmanccancer.org>][  
 Utah Cancer Control Program: [<http://www.cancerutah.org>][  
 Utah Cancer Action Network: [<http://www.ucan.cc>][



## More Resources and Links

---

Evidence-based community health improvement ideas and interventions may be found at the following sites:

Additional indicator data by state and county may be found on these Websites:

- [CDC Prevention Status Reports for all 50 states](#)
- [County Health Rankings](#)
- Kaiser Family Foundation's [StateHealthFacts.org](#)
- CDC WONDER [DATA2010](#), the Healthy People 2010 Database.

Medical literature can be queried at the [PubMed](#) website.

Page Content Updated On 02/28/2020, Published on 03/12/2021

Cancer Control Program, Bureau of Health Promotion, Division of Disease Control and Prevention, Utah Department of Health, Salt Lake City, UT 84114-2107, Telephone: 801-538-6157, Fax: 801-536-0172, Website: [www.cancerutah.org](http://www.cancerutah.org), Contact: Marie Nagata, Program Manager

The information provided above is from the Department of Health's Center for Health Data IBIS-PH web site (<http://ibis.health.state.gov>). The information published on this website may be reproduced without permission. Please use the following citation: " Retrieved Wed, 21 April 2021 16:44:37 from Department of Health, Center for Health Data, Indicator-Based Information System for Public Health Web site: <http://ibis.health.state.gov> ".

Content updated: Fri, 12 Mar 2021 13:23:49 MST